



Aluminum Profile & Accessories

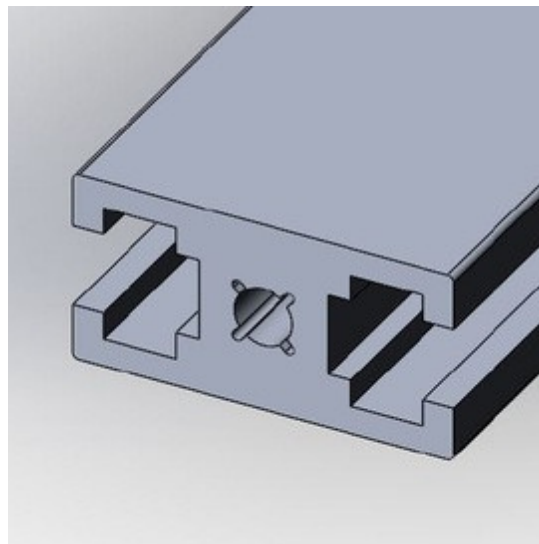


Product Catalogue 2025

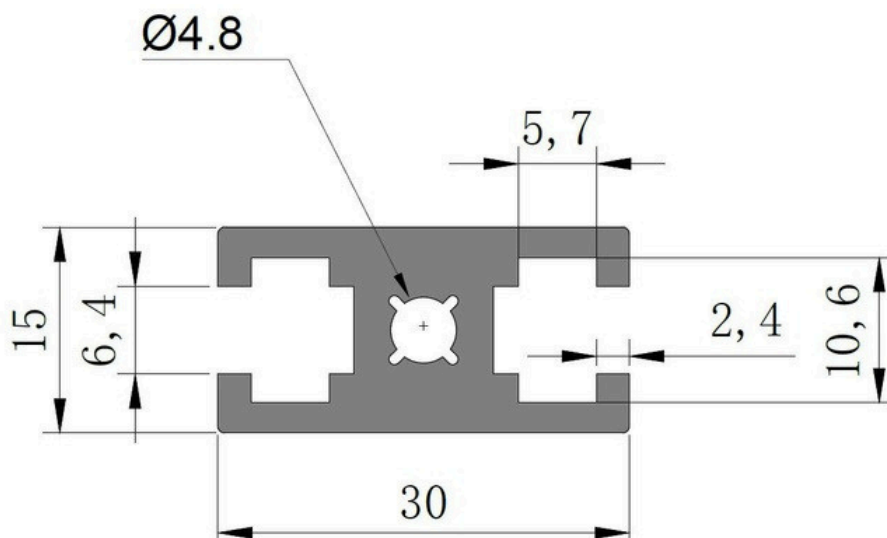


Strut Profile PG15 featuring 6mm T-slot is designed for making light weight assemblies.

Description	Mass (KG/M)	Part Number
Strut Profile PG15 15x30 2 slots Heavy (SW)	0.690	1.11.15.015030.02H.SW

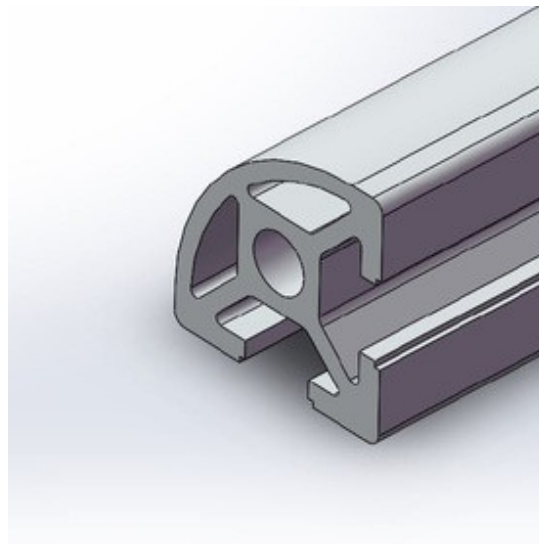


15X30 2 Slots Heavy

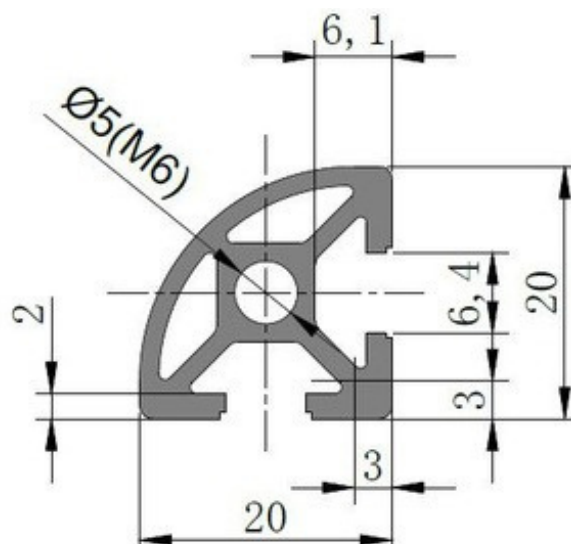


Strut Profile PG20 featuring 6mm T-slot is designed for making heavy weight assemblies.

Description	Mass (KG/M)	Part Number
Strut Profile PG20R90 2 slots (SW)	0.441	1.11.20.020020.R90.02.SW

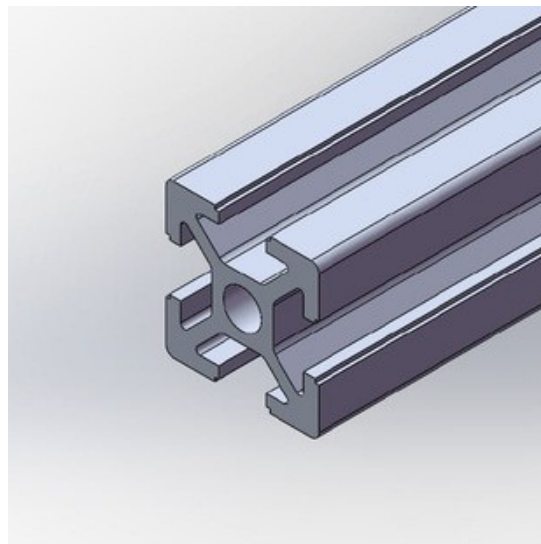


20x20 R90 2 Slots

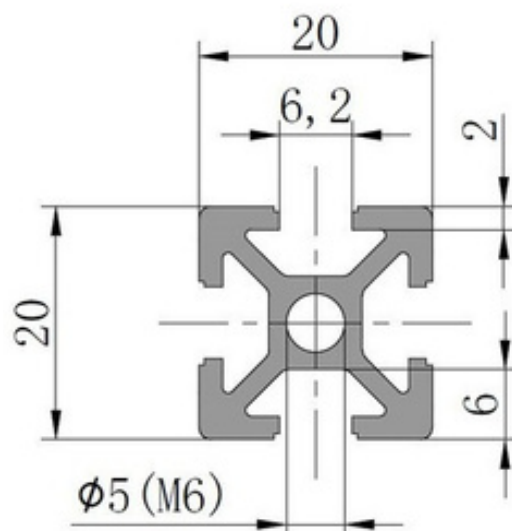


Strut Profile PG20 featuring 6mm T-slot is designed for making light weight assemblies.

Description	Mass (KG/M)	Part Number
Strut Profile PG20 20 x 20 4 slots (SW)	0.486	1.11.20.020020.04.SW

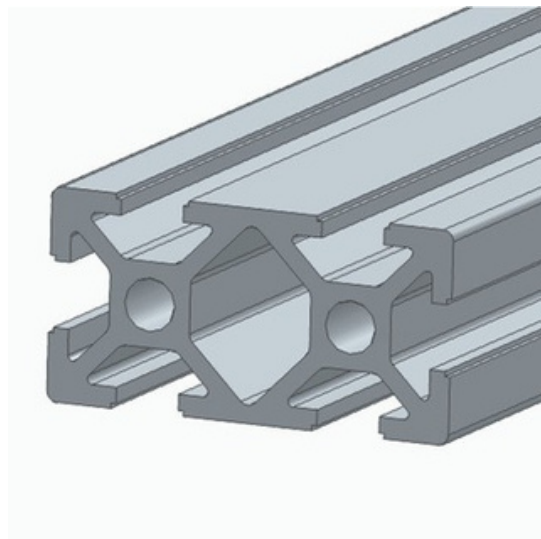


20x20 4 Slots

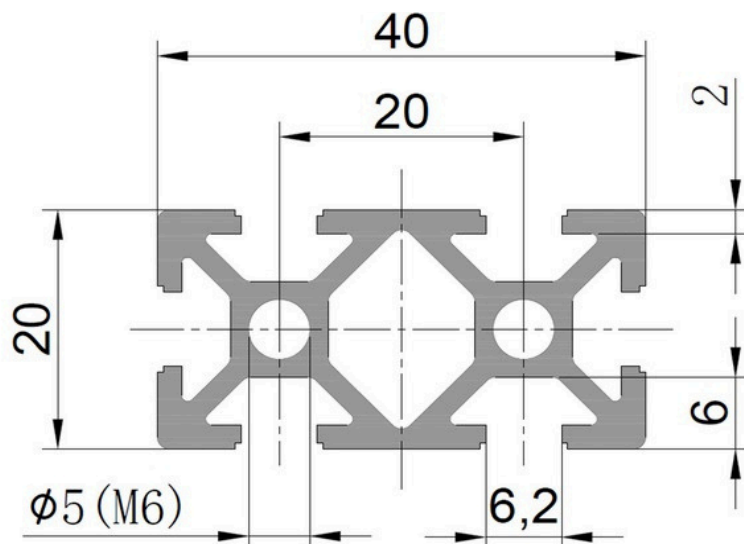


Strut Profile PG20 featuring 6mm T-slot is designed for making heavy weight assemblies.

Description	Mass (KG/M)	Part Number
Strut Profile PG20 20x40 6 slots (SW)	0.880	1.11.20.020040.06. SW

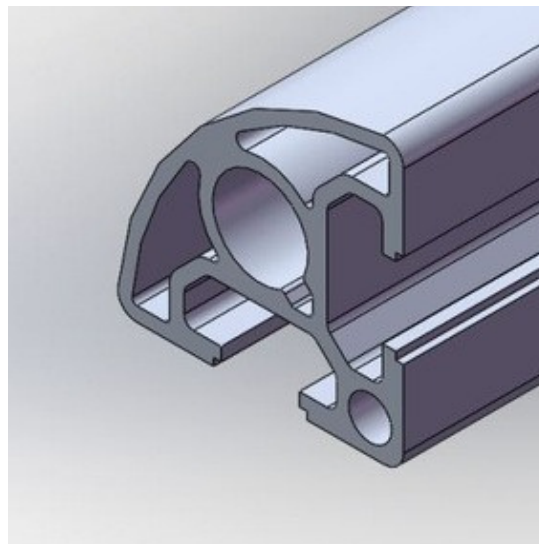


20x40 6 Slots

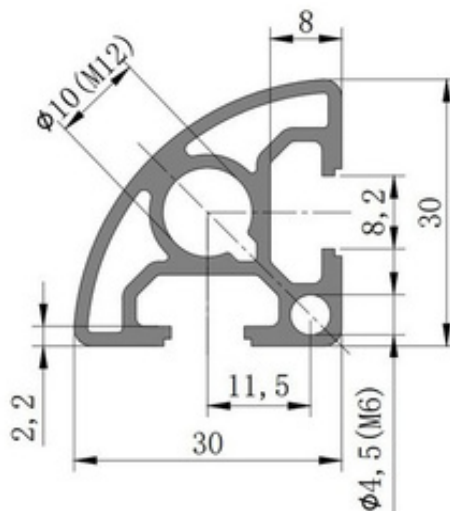


Strut Profile PG30 featuring 8mm T-slot is designed for making medium weight assemblies.

Description	Mass (KG/M)	Part Number
Strut Profile PG30 R90 2 slots(SW)	0.517	1.11.30.030030.R90.02.SW

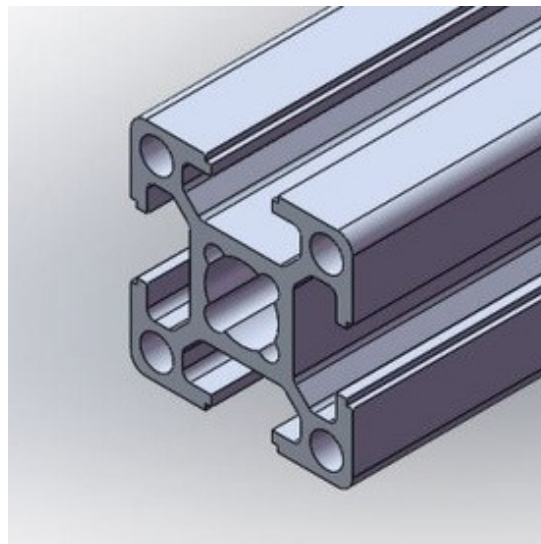


30x30 R90 2 Slots

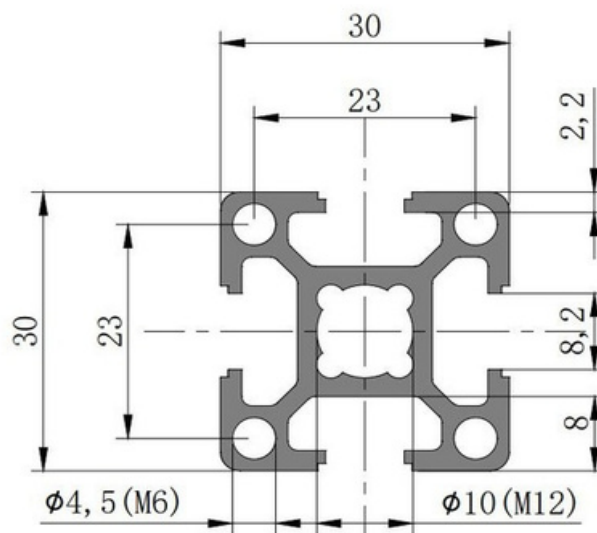


Strut Profile PG30 featuring 8mm T-slot is designed for making medium weight assemblies.

Description	Mass (KG/M)	Part Number
Strut Profile PG30 30x30 4 slots (SW)	0.853	1.11.30.030030.04.SW

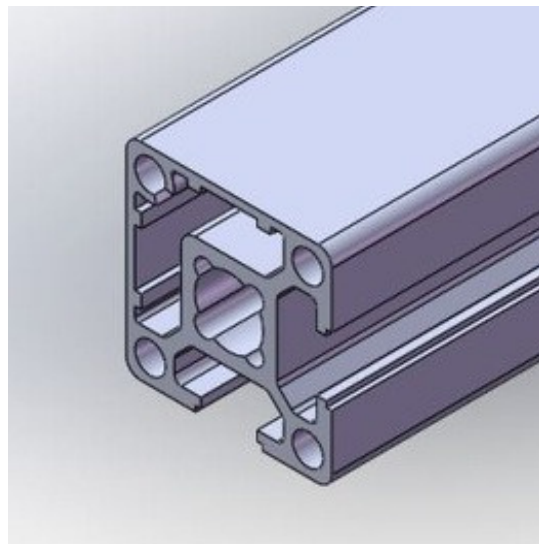


30x30 4 Slots

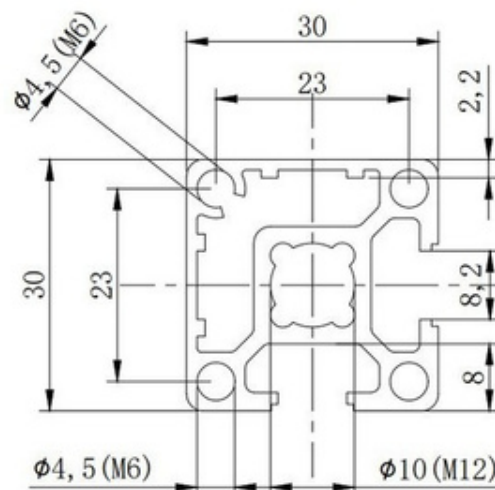


Strut Profile PG30 featuring 8mm T-slot is designed for making medium weight assemblies.

Description	Mass (KG/M)	Part Number
Strut Profile PG30 30x30 2 slots Type A(SW)	0.860	1.11.30.030030.02A.SW

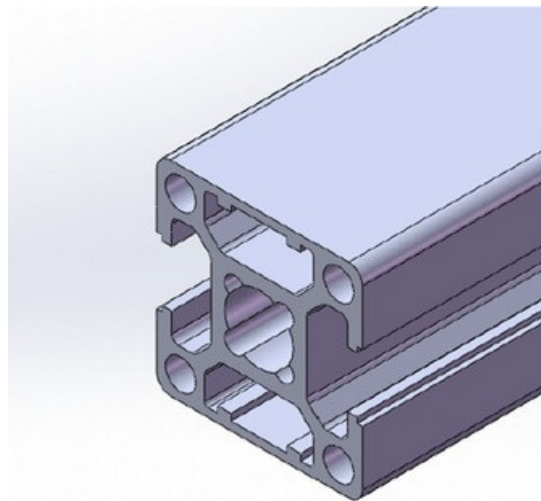


30x30 2 Slots Type A

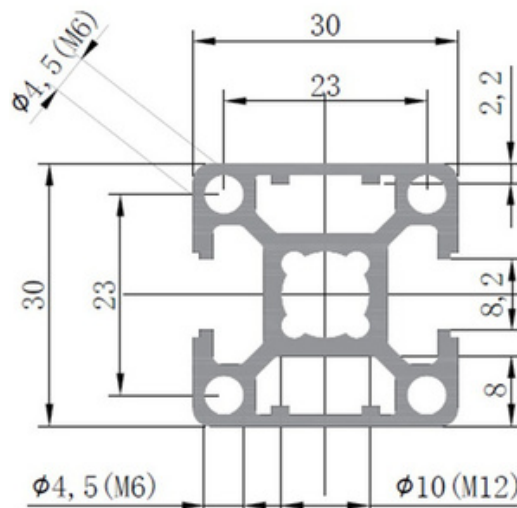


Strut Profile PG30 featuring 8mm T-slot is designed for making heavy weight assemblies.

Description	Mass (KG/M)	Part Number
Strut Profile PG30 30x30 2 slots Type B(SW)	0.902	1.11.30.030030.02B.ECO.SW

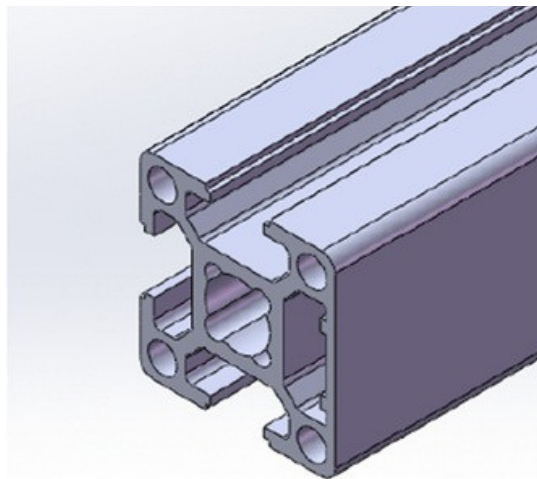


30x30 2 Slots Type B

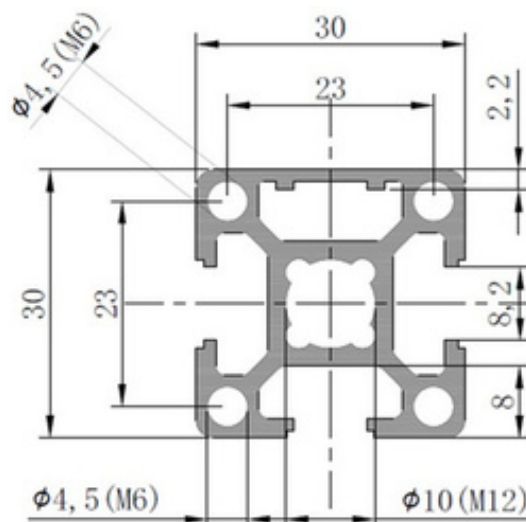


Strut Profile PG30 featuring 8mm T-slot is designed for making heavy weight assemblies.

Description	Mass (KG/M)	Part Number
Strut Profile PG30 30x30 3 slots (SW)	0.881	1.11.30.030030.03.ECO.SW

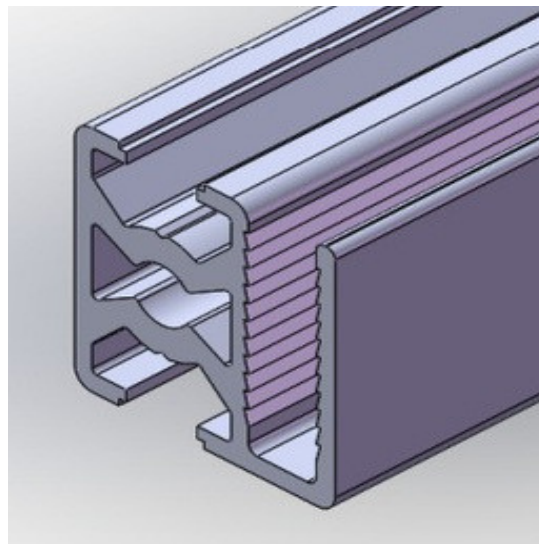


30x30 3 Slots

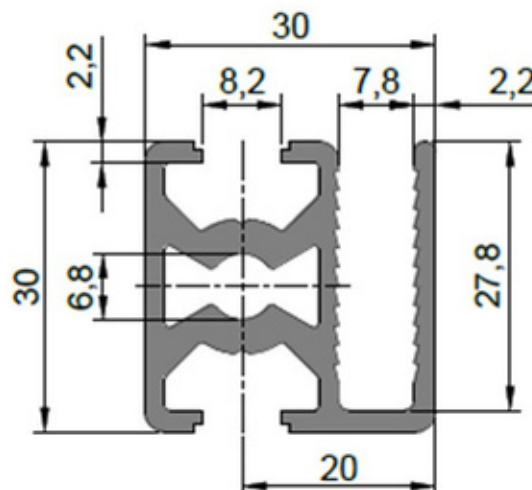


Protective Grille Profile which is used to produce the professional machine guard and enclosure system, have the same feature size with the corresponding strut profile.

Description	Mass (KG/M)	Part Number
Protective Grille Profile PG30 30x30 1 slot Grille slot (SW)	0.943	1.22.30.030030.01.SW

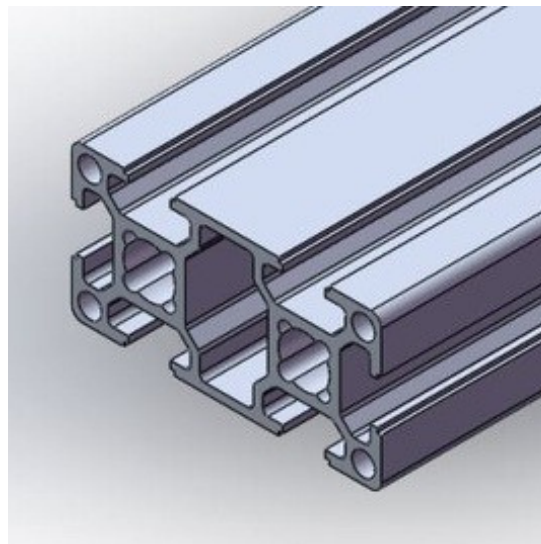


30x30 1 Grille Slots

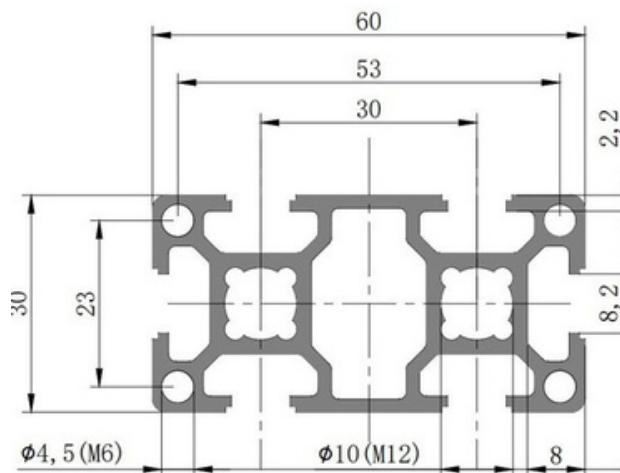


Strut Profile PG30 featuring 8mm T-slot is designed for making medium weight assemblies.

Description	Mass (KG/M)	Part Number
Strut Profile PG30 30x60 6 slots (SW)	1.507	1.11.30.030060.06.SW

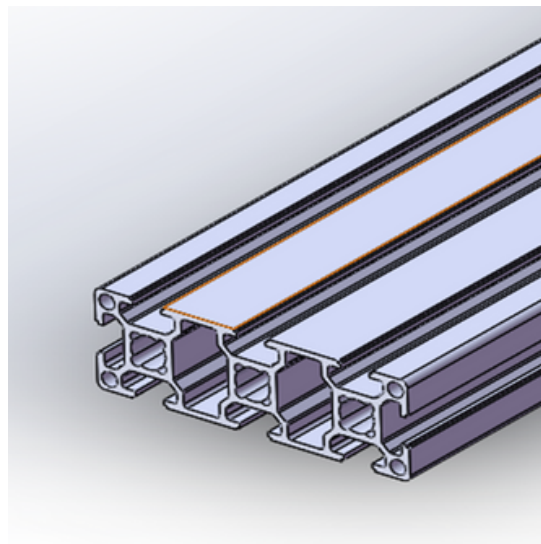


30x60 6 Slots

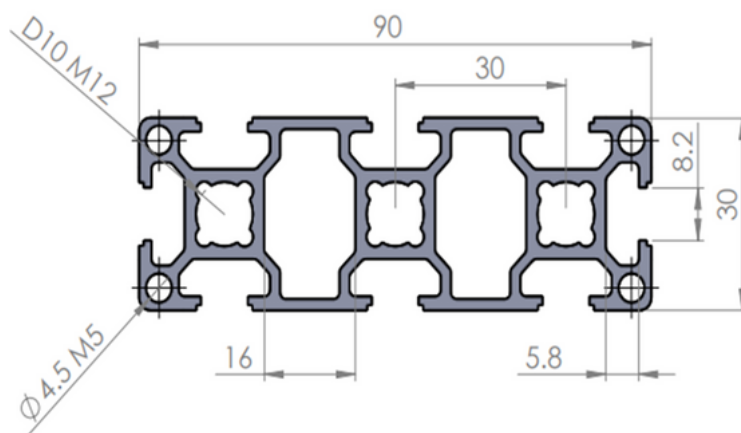


Strut Profile PG30 featuring 8mm T-slot is designed for making medium weight assemblies.

Description	Mass (KG/M)	Part Number
Strut Profile PG30 30x90 8 Slots (SW)	2.200	1.11.30.030090.08. SW

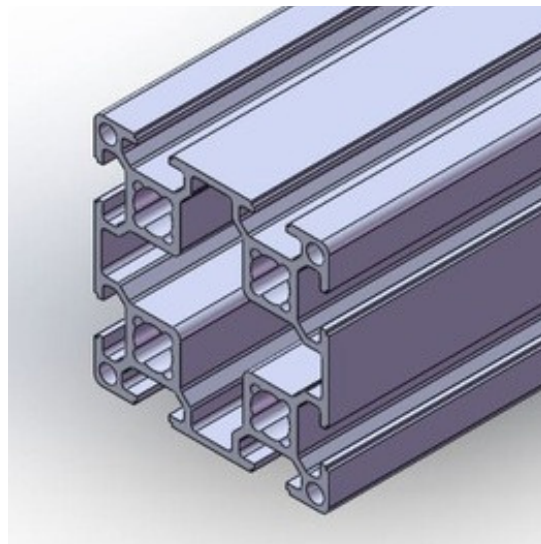


30x90 8 Slots

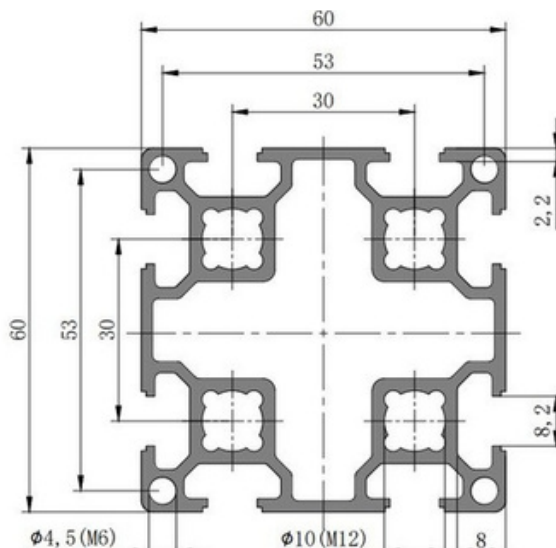


Strut Profile PG30 featuring 8mm T-slot is designed for making medium & heavy weight assemblies.

Description	Mass (KG/M)	Part Number
Strut Profile PG30 60x60 8 slots(SW)	2.416	1.11.30.060060.08.SW

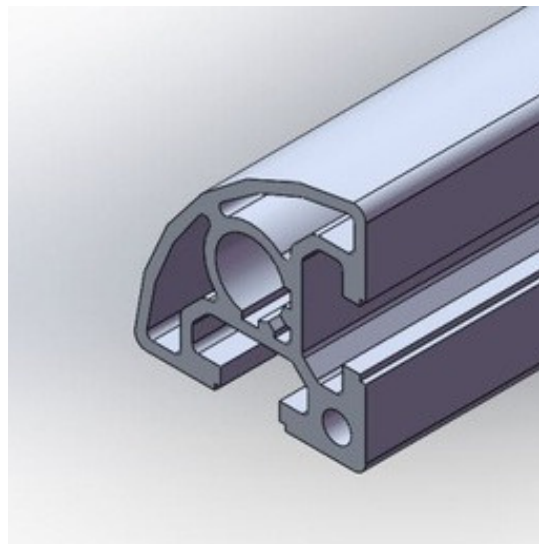


60x60 8 Slots

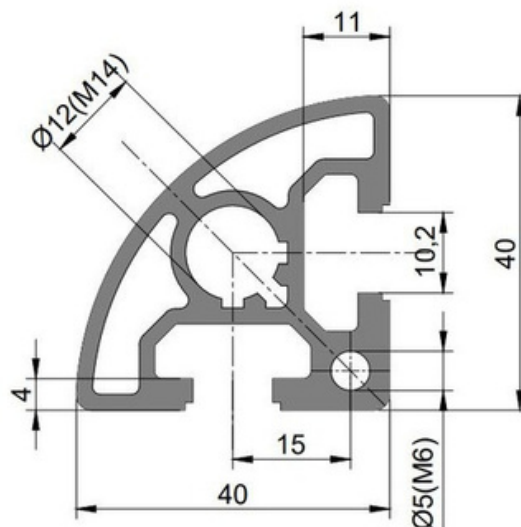


Strut Profile PG40 featuring 10mm T-slot is designed for making heavy weight assemblies. Also available in Wooden and Black color finish.

Description	Mass (KG/M)	Part Number
Strut Profile PG40 40R90 2 slots Heavy (SW)	1.330	1.11.40.040040.R90.02H.SW

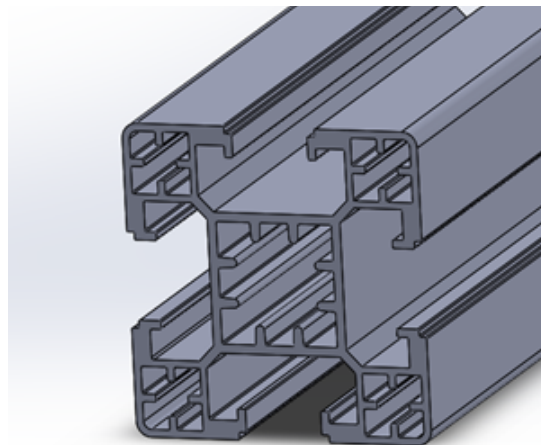


40R90 2 Slots Heavy

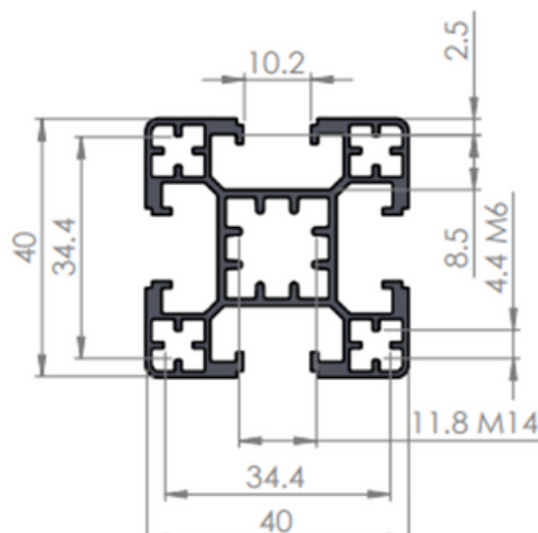


Strut Profile PG40 featuring 10mm T-slot is designed for making light weight assemblies.

Description	Mass (KG/M)	Part Number
Strut Profile PG40 40x40 4 slots superlight (SW)	1.020	1.11.40.040040.04.SL. SW

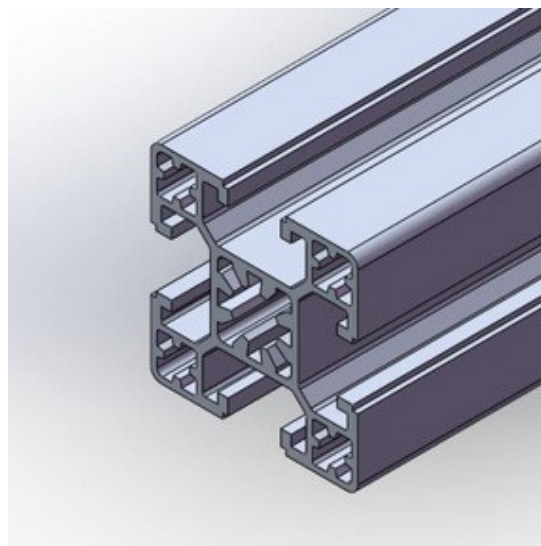


40x40 4 Slots Super Light

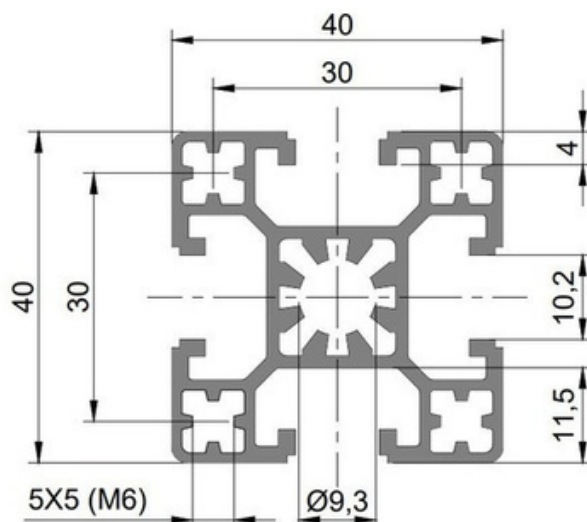


Strut Profile PG40 featuring 10mm T-slot is designed for making medium & heavy weight assemblies.

Description	Mass (KG/M)	Part Number
Strut Profile PG40 40x40 4 slots Light (SW)	1.200	1.11.40.040040.04L.SW

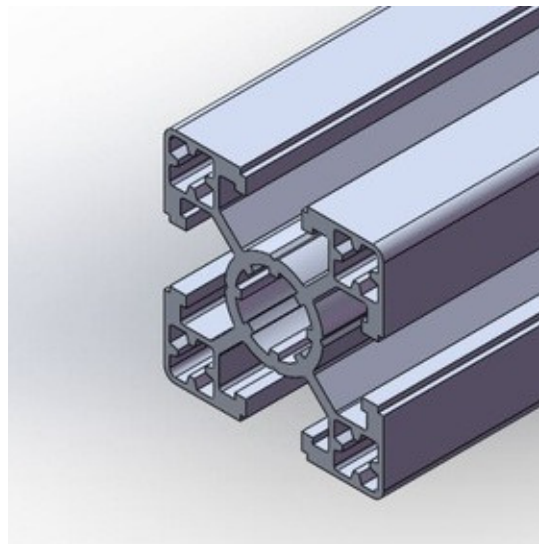


40X40 4 Slots Light

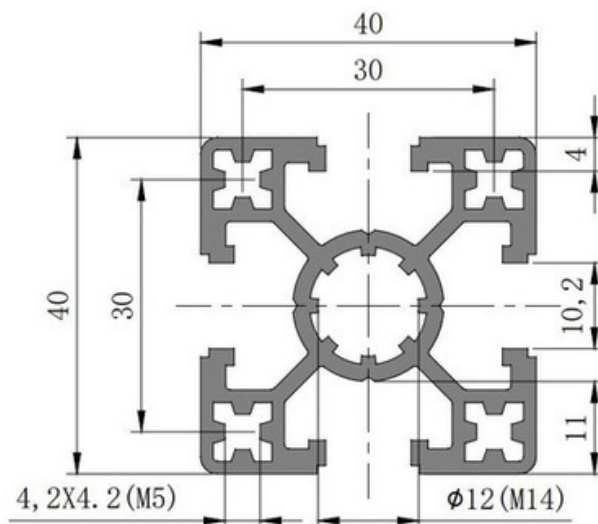


Strut Profile PG40 featuring 10mm T-slot is designed for making medium & heavy weight assemblies. Also available in Wooden and Black color finish.

Description	Mass (KG/M)	Part Number
Strut Profile PG40 40x40 4 slots Medium (SW)	1.459	1.11.40.040040.04M.SW

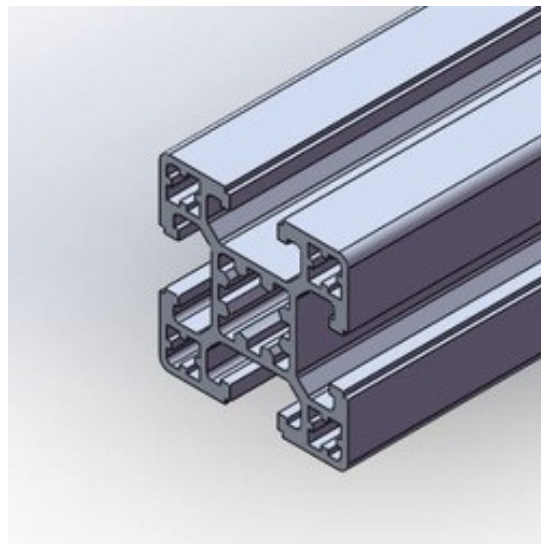


40X40 4 Slots Medium

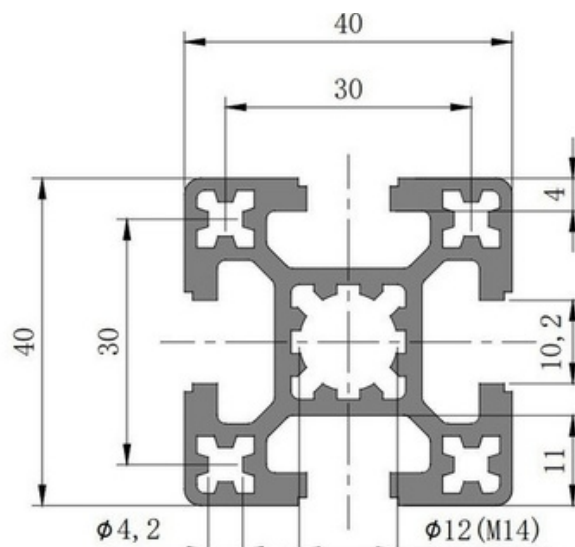


Strut Profile PG40 featuring 10mm T-slot is designed for making medium & heavy weight assemblies.

Description	Mass (KG/M)	Part Number
Strut Profile PG40 40x40 4 slots Heavy (SW)	1.607	1.11.40.040040.04H.SW

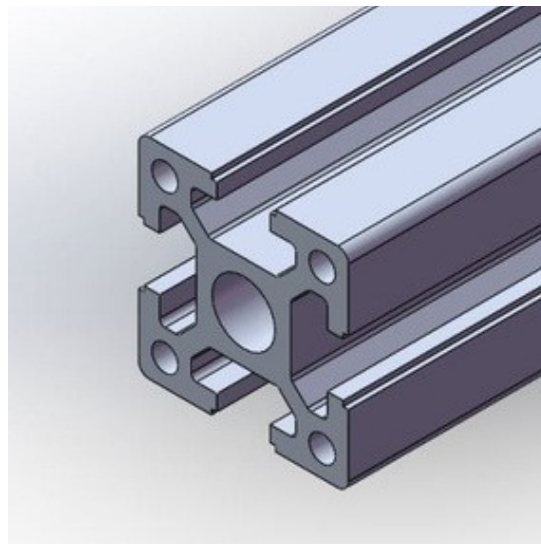


40X40 4 Slots Heavy

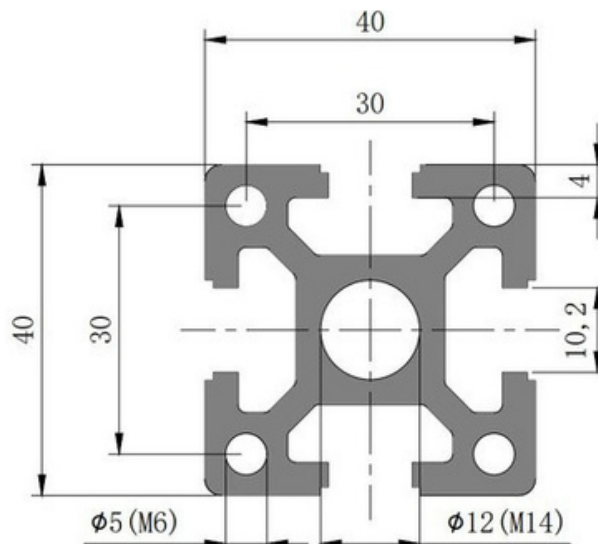


Strut Profile PG40 featuring 10mm T-slot is designed for making heavy weight assemblies.

Description	Mass (KG/M)	Part Number
Strut Profile PG40 40x40 4 slots Extra Heavy (SW)	1.960	1.11.40.040040.04XH.SW

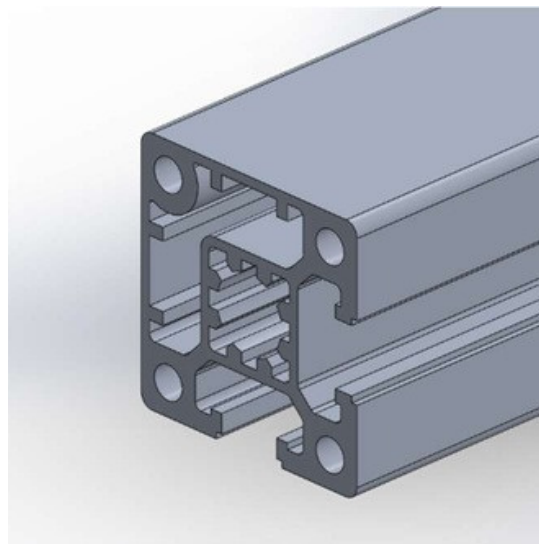


40X40 4 Slots Extra Heavy

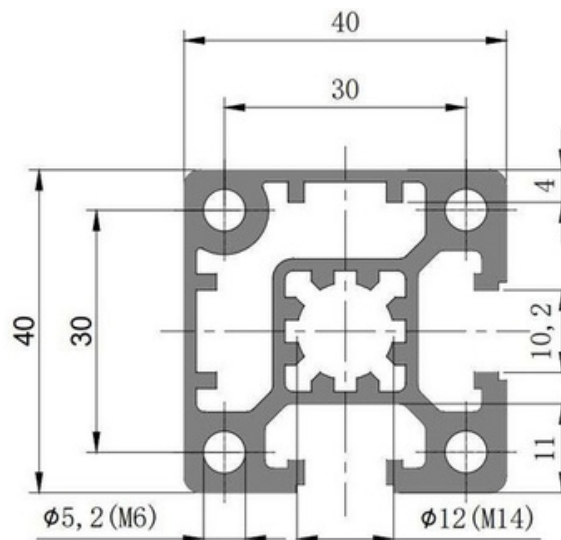


Strut Profile PG40 featuring 10mm T-slot is designed for making medium & heavy weight assemblies.

Description	Mass (KG/M)	Part Number
Strut Profile PG40 40x40 2 slots Type A (SW)	1.673	1.11.40.040040.02A.SW

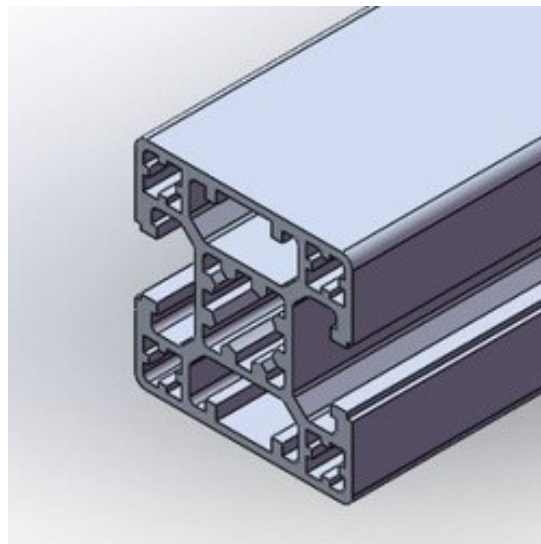


40X40 2 Slots Type A

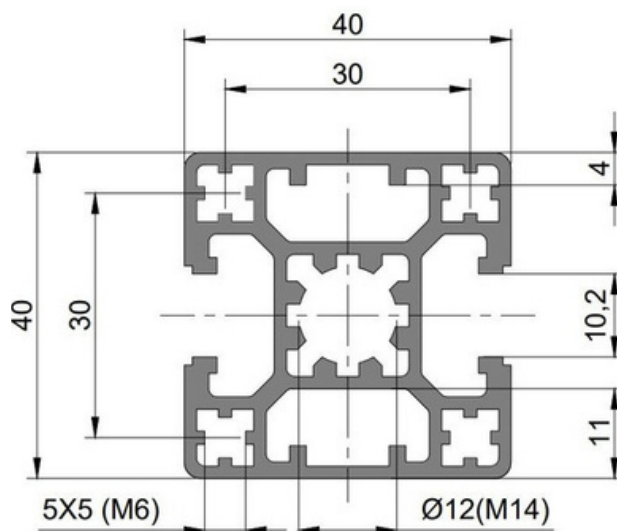


Strut Profile PG40 featuring 10mm T-slot is designed for making medium & heavy weight assemblies.

Description	Mass (KG/M)	Part Number
Strut Profile PG40 40x40 2 slots Type B (SW)	1.480	1.11.40.040040.02B.SW

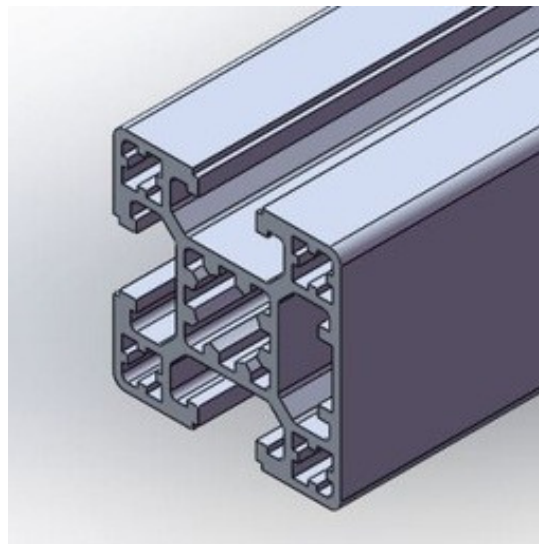


40X40 2 Slots Type B

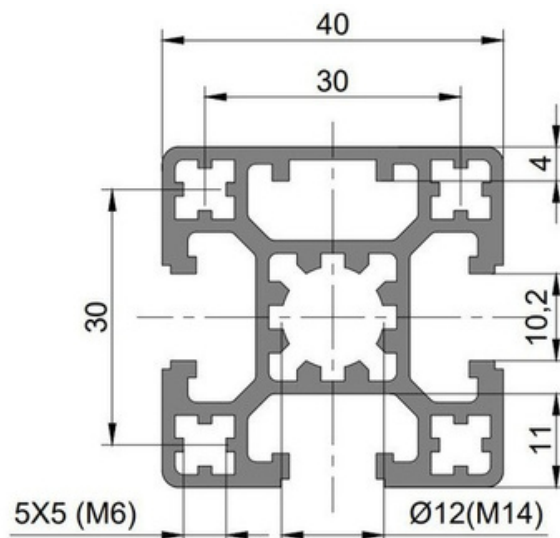


Strut Profile PG40 featuring 10mm T-slot is designed for making medium & heavy weight assemblies. Also available in Wooden and Black color finish.

Description	Mass (KG/M)	Part Number
Strut Profile PG40 40x40 3 slots (SW)	1.450	1.11.40.040040.03.SW

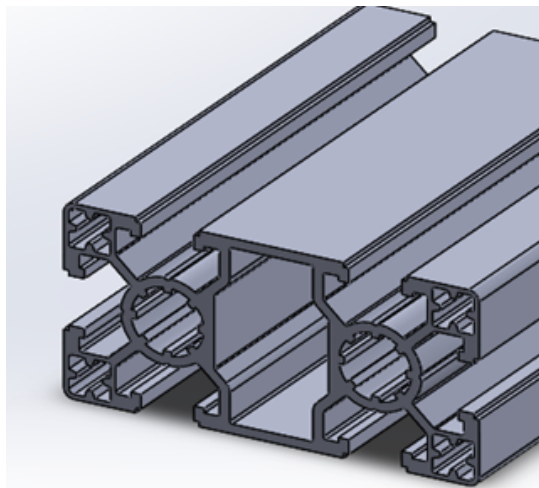


40X40 3 Slots

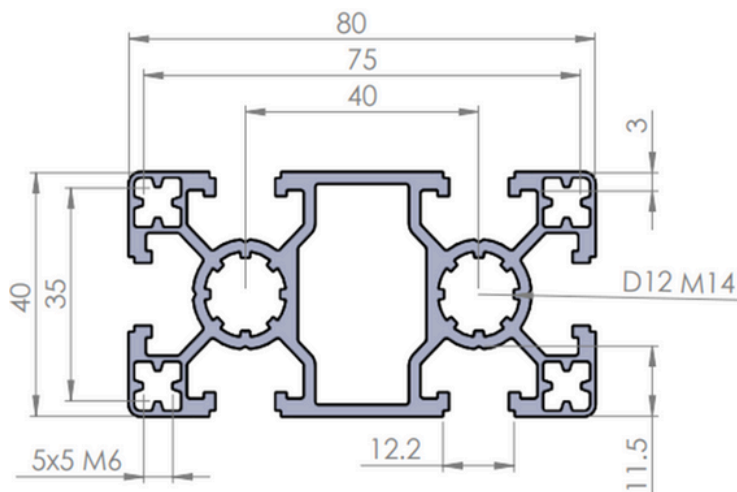


Strut Profile PG40 featuring 10mm T-slot is designed for making light weight assemblies.

Description	Mass (KG/M)	Part Number
Strut Profile PG40 40x80 6 slots Light (SW)	2.301	1.11.40.040080.06.L. SW

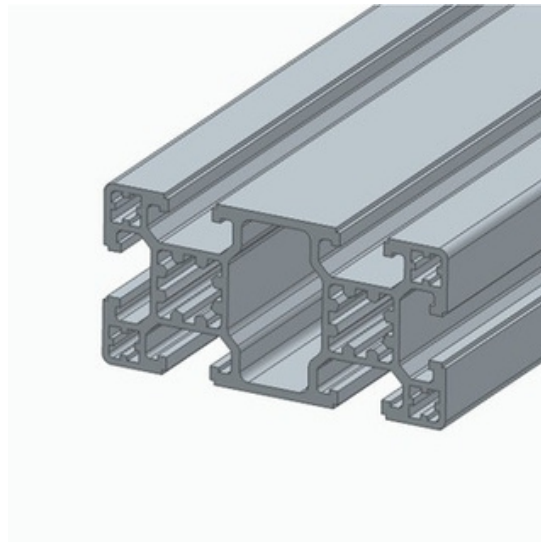


40X80 6 slots Light

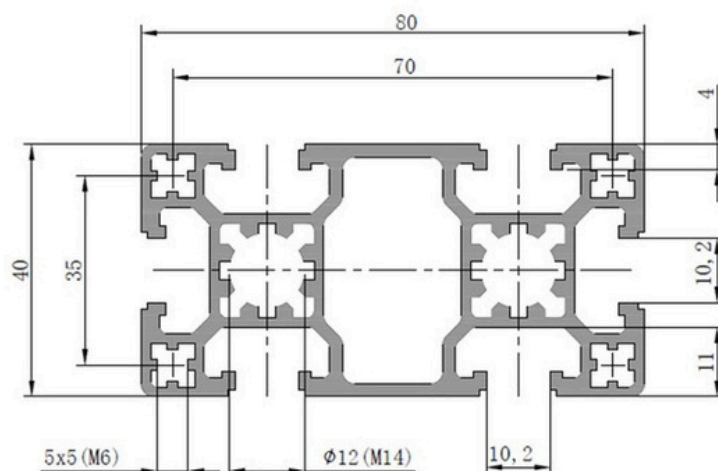


Strut Profile PG40 featuring 10mm T-slot is designed for making medium & heavy weight assemblies.

Description	Mass (KG/M)	Part Number
Strut Profile PG40 40X80 6 slots Medium (SW)	2.450	1.11.40.040080.06.M. SW

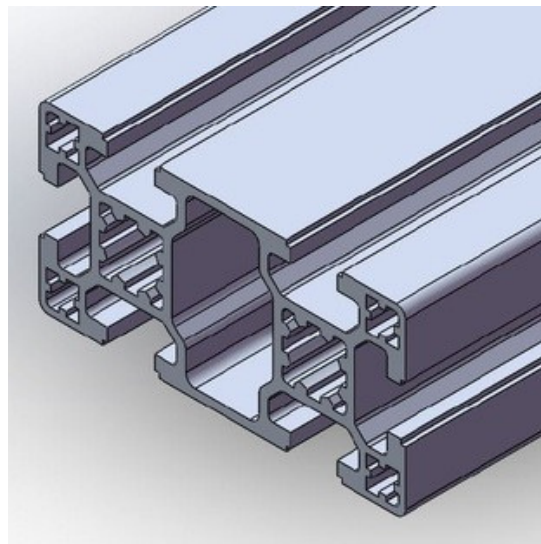


40X80 6 slots Medium

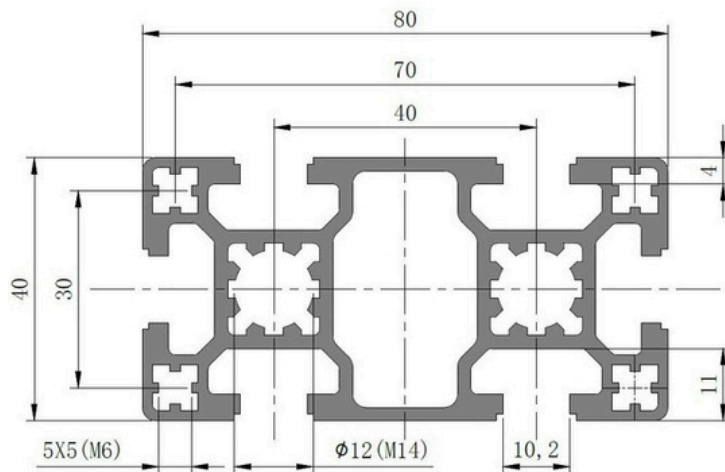


Strut Profile PG40 featuring 10mm T-slot is designed for making medium & heavy weight assemblies.

Description	Mass (KG/M)	Part Number
Strut Profile PG40 40x80 6 slots Heavy (SW)	2.610	1.11.40.040080.06H.SW

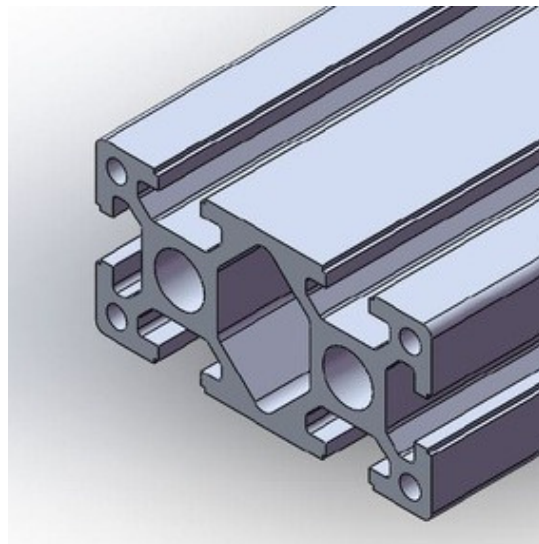


40X80 6 slots Heavy

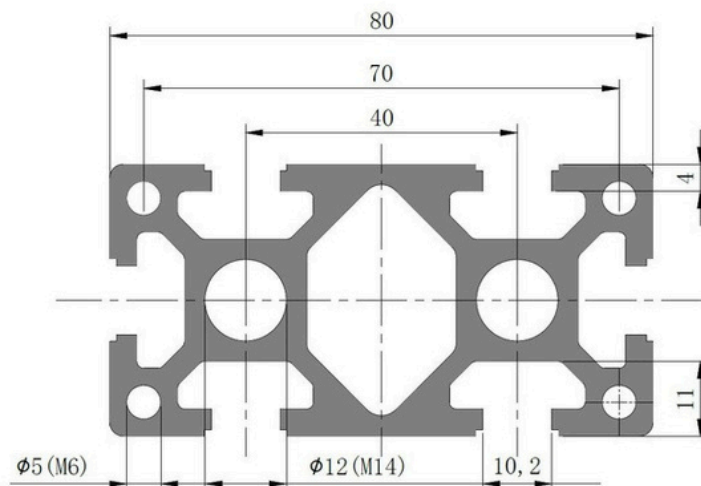


Strut Profile PG40 featuring 10mm T-slot is designed for making heavy weight assemblies.

Description	Mass (KG/M)	Part Number
Strut Profile PG40 40x80 6 slots Extra Heavy (SW)	3.560	1.11.40.040080.06XH.SW

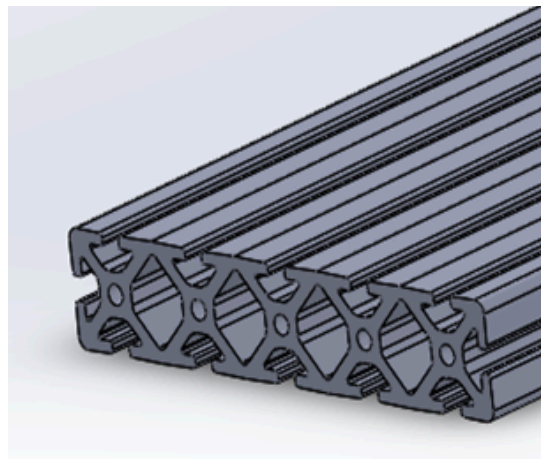


40X80 6 slots Extra Heavy

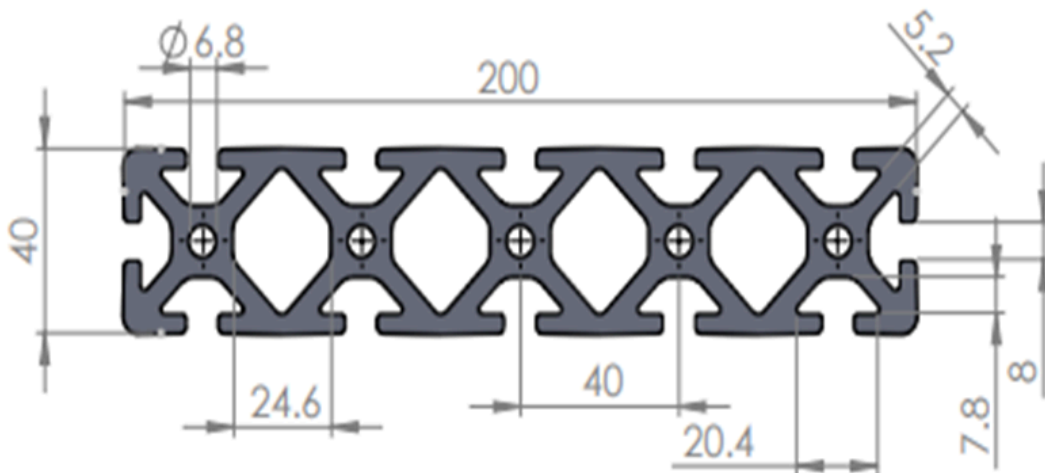


Strut Profile PG40 featuring 8mm T-slot is designed for making medium & heavy weight assemblies.

Description	Mass (KG/M)	Part Number
Strut Profile PG40 40x200 12 Slots (SW)	10.520	1.11.40.040200.12. SW

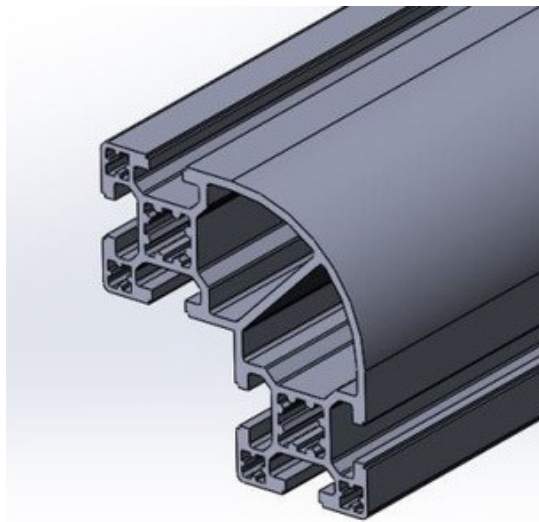


40X200 6 slots

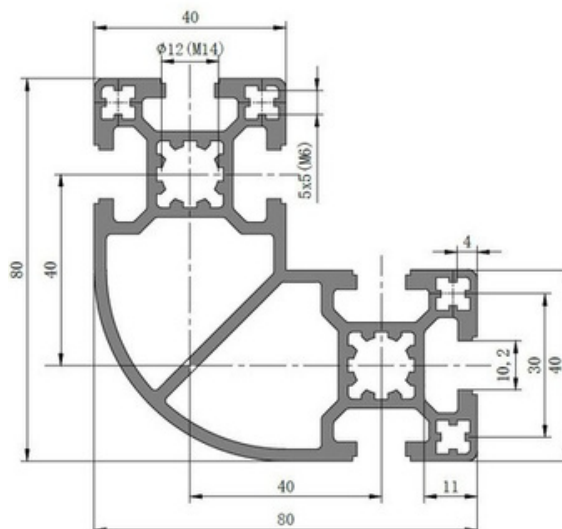


Strut Profile PG40 featuring 10mm T-slot is designed for making heavy weight assemblies.

Description	Mass (KG/M)	Part Number
Strut Profile PG40 80x80 R90 6 slots (SW)	3.370	1.11.40.080080.R90.06.SW

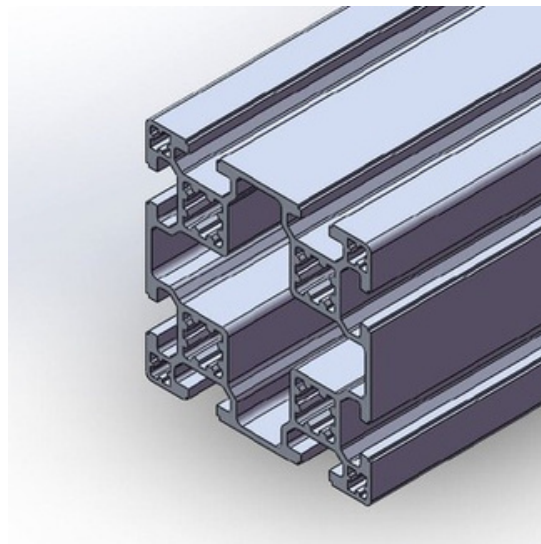


80X80 R90 2 Slots

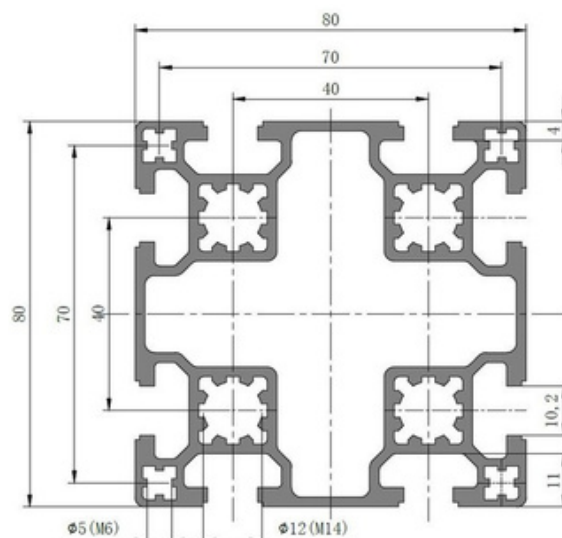


Strut Profile PG40 featuring 10mm T-slot is designed for making heavy weight assemblies.

Description	Mass (KG/M)	Part Number
Strut Profile PG40 80x80 8 slots Heavy(SW)	4.136	1.11.40.080080.08H.SW

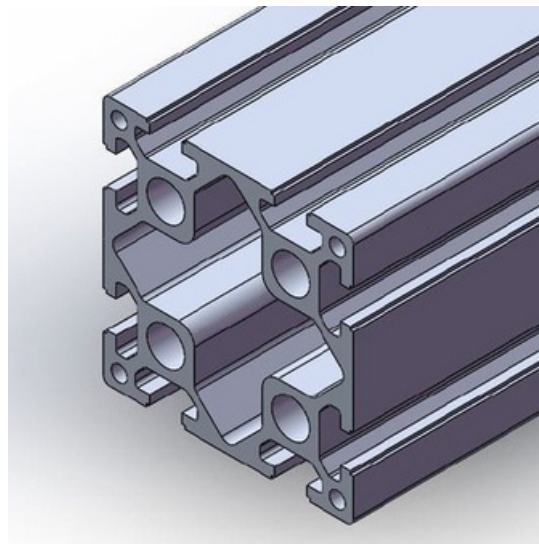


80X80 8 Slots Heavy

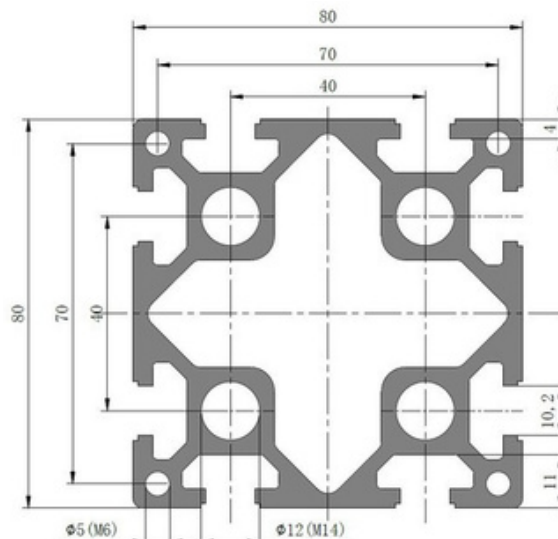


Strut Profile PG40 featuring 10mm T-slot is designed for making heavy weight assemblies.

Description	Mass (KG/M)	Part Number
Strut Profile PG40 80x80 8 slots Extra Heavy (SW)	5.676	1.11.40.080080.08XH.SW

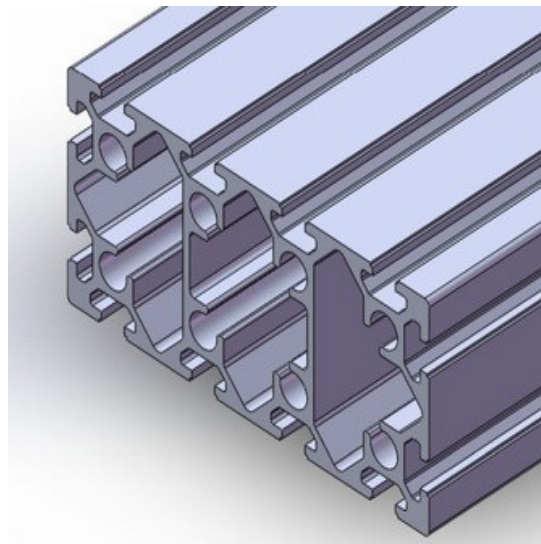


80X80 8 Slots Extra Heavy

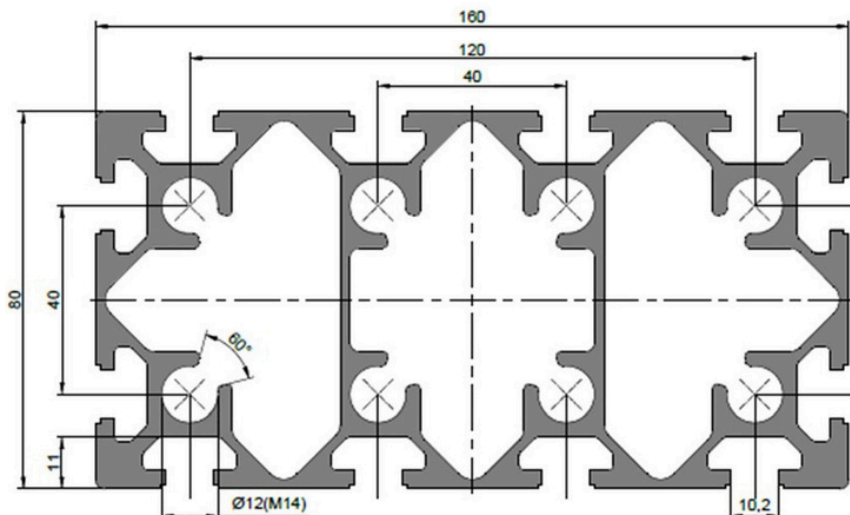


Strut Profile PG40 featuring 10mm T-slot is designed for making heavy weight assemblies.

Description	Mass (KG/M)	Part Number
Strut Profile PG40 80x160 12 slots (SW)	8.847	1.11.40.080160.12.SW

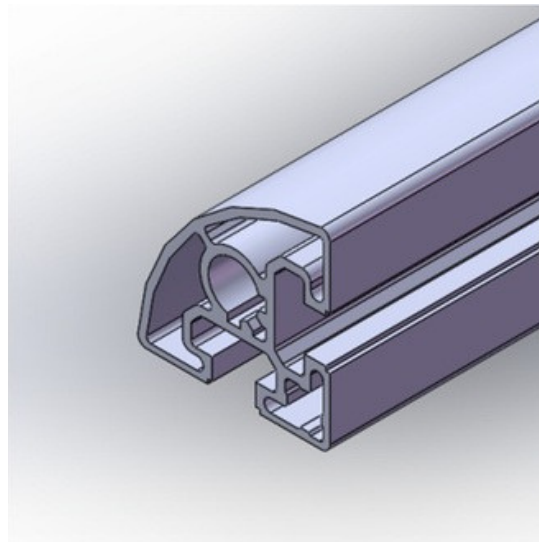


80X160 12 Slots

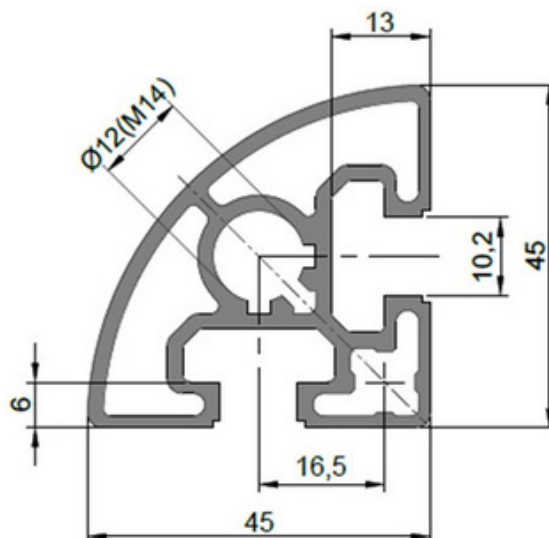


Strut Profile PG45 featuring 10mm T-slot is designed for making heavy weight assemblies.

Description	Mass (KG/M)	Part Number
Strut Profile PG45 45X45 R90 2 slots(SW)	1.395	1.11.45.045045.R90.02H.SW

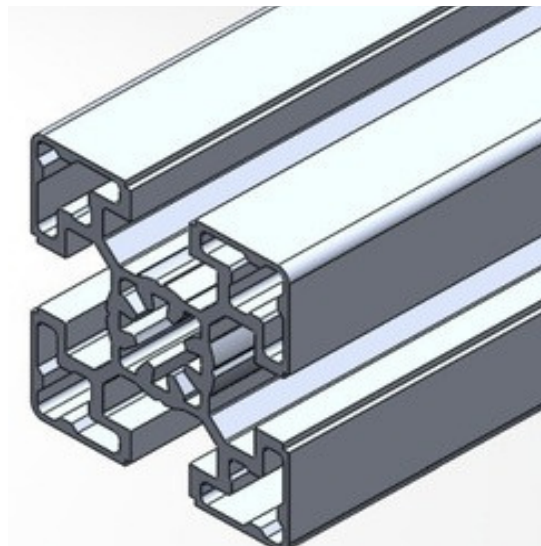


45X45 R90 2 Slots

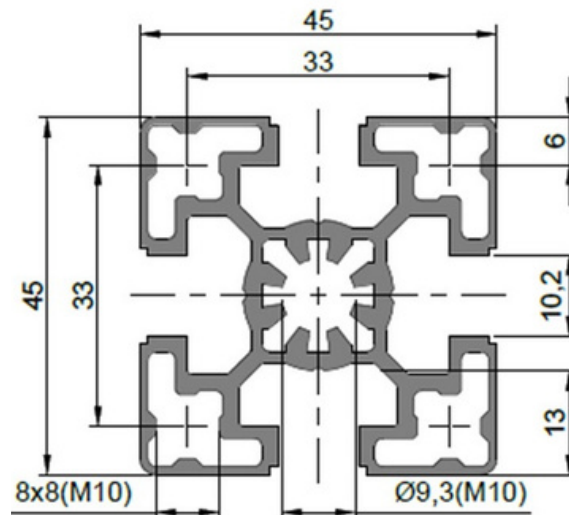


Strut Profile PG45 featuring 10mm T-slot is designed for making light weight assemblies.

Description	Mass (KG/M)	Part Number
Strut Profile PG45 45x45 4 slots Light (SW)	1.200	1.11.45.045045.04L.SW

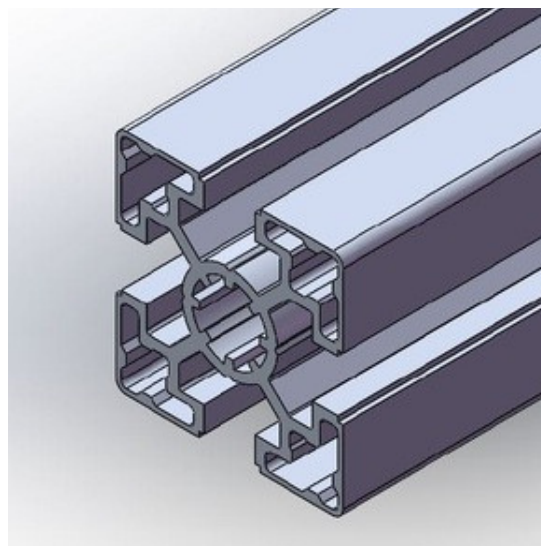


45X45 4 Slots Light

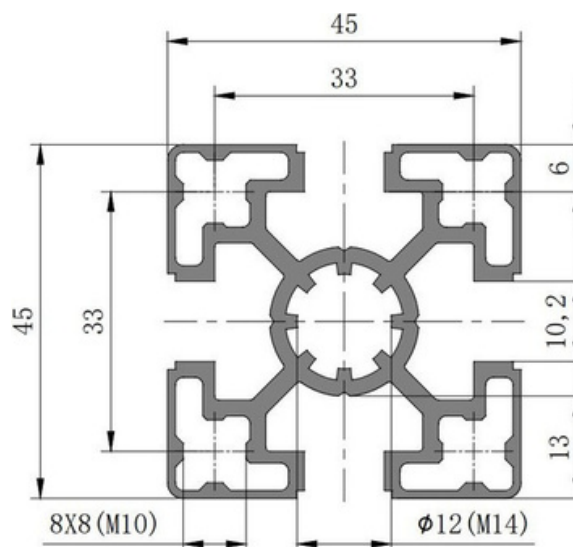


Strut Profile PG45 featuring 10mm T-slot is designed for making medium weight assemblies.

Description	Mass (KG/M)	Part Number
Strut Profile PG45 45x45 4 slots Medium (SW)	1.544	1.11.45.045045.04M.SW

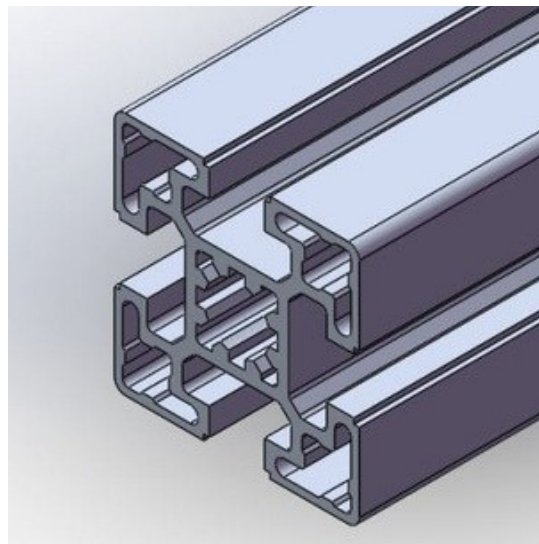


45X45 4 Slots Medium

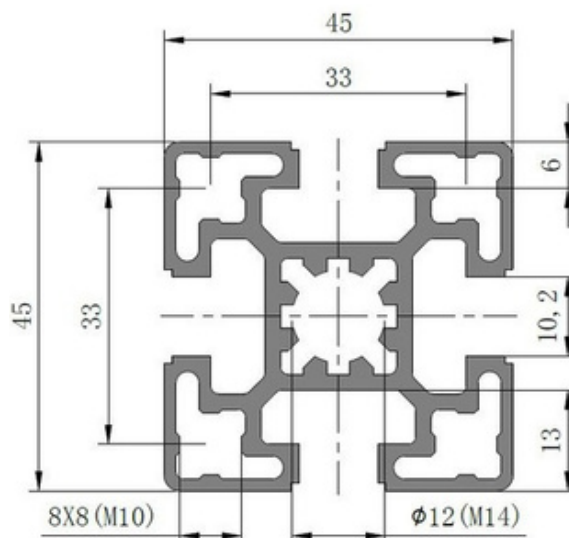


Strut Profile PG45 featuring 10mm T-slot is designed for making heavy weight assemblies.

Description	Mass (KG/M)	Part Number
Strut Profile PG45 45x45 4 slots Heavy (SW)	1.729	1.11.45.045045.04H .SW

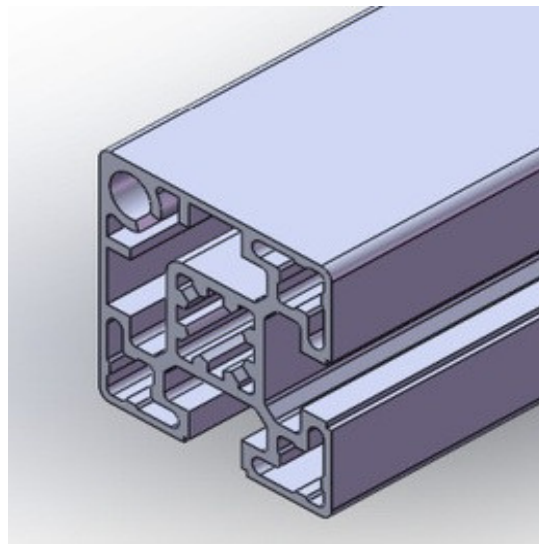


45X45 4 Slots Heavy

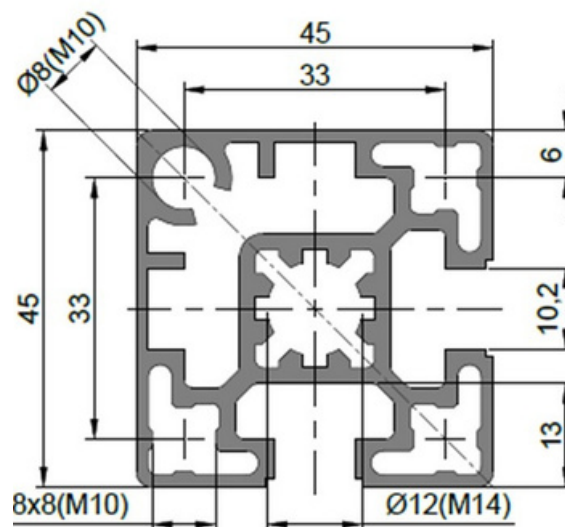


Strut Profile PG45 featuring 10mm T-slot is designed for making heavy weight assemblies.

Description	Mass (KG/M)	Part Number
Strut Profile PG45 45x45 2 slots Type A (SW)	1.791	1.11.45.045045.02A.SW

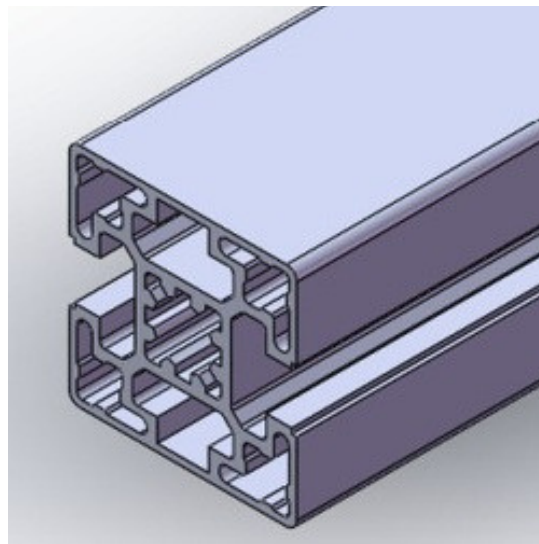


45X45 2 Slots Type A

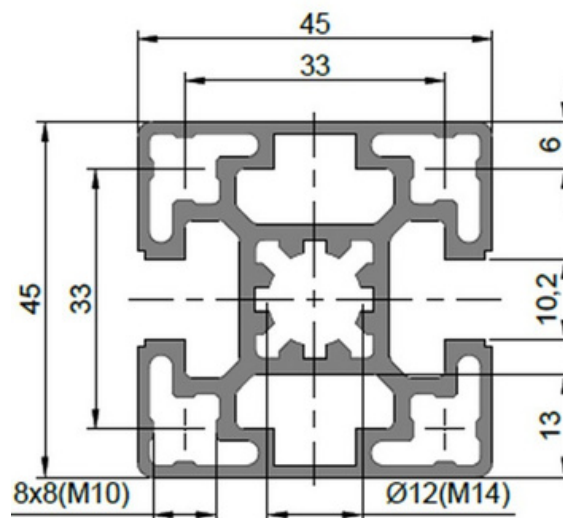


Strut Profile PG45 featuring 10mm T-slot is designed for making heavy weight assemblies.

Description	Mass (KG/M)	Part Number
Strut Profile PG45 45x45 2 slots Type B (SW)	1.830	1.11.45.045045.02B.SW

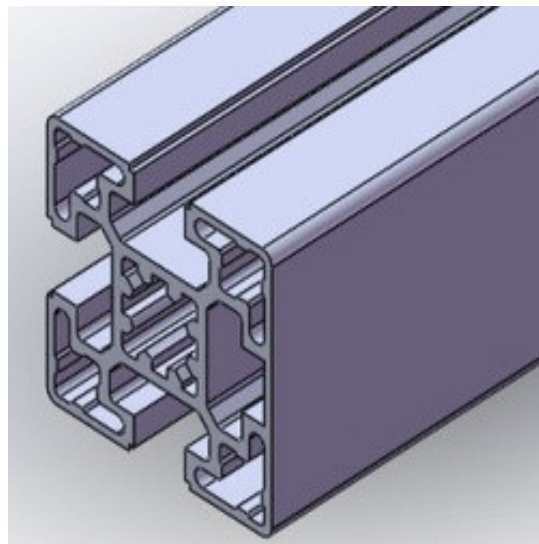


45X45 2 Slots Type B

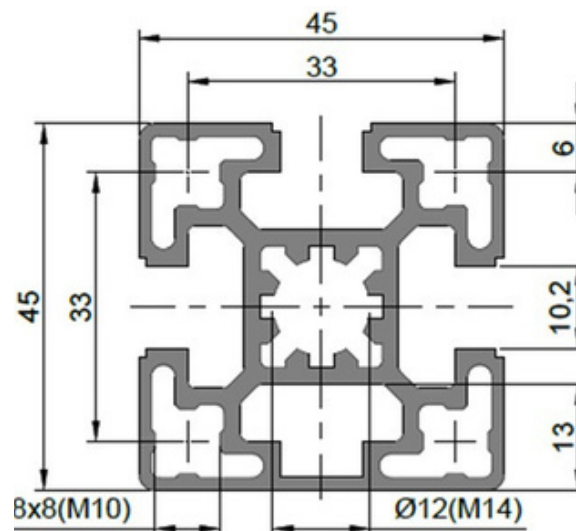


Strut Profile PG45 featuring 10mm T-slot is designed for making heavy weight assemblies.

Description	Mass (KG/M)	Part Number
Strut Profile PG45 45x45 3 Slots (SW)	1.783	1.11.45.045045.03.SW

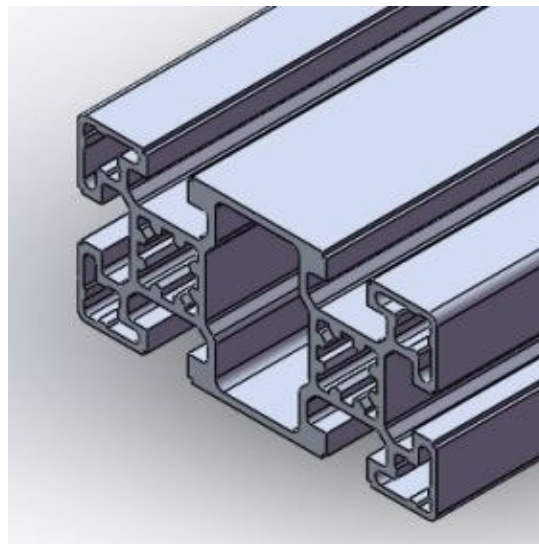


45X45 3 Slots

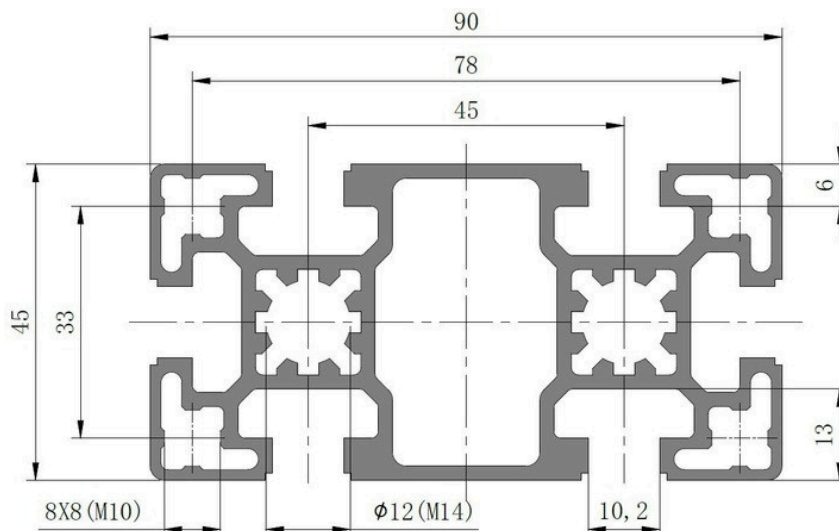


Strut Profile PG45 featuring 10mm T-slot is designed for making heavy weight assemblies.

Description	Mass (KG/M)	Part Number
Strut Profile PG45 45x90 6 slots Heavy (SW)	3.087	1.11.45.045090.06H.SW

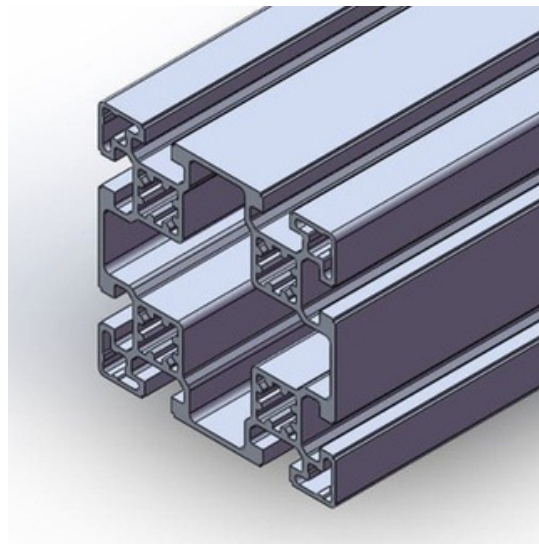


45X90 6 Slots Heavy

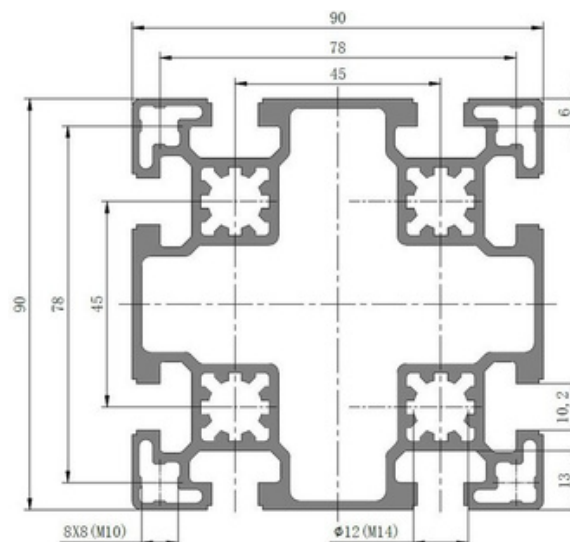


Strut Profile PG45 featuring 10mm T-slot is designed for making heavy weight assemblies.

Description	Mass (KG/M)	Part Number
Strut Profile PG45 90x90 8 slots Heavy (SW)	4.920	1.11.45.090090.08H .SW

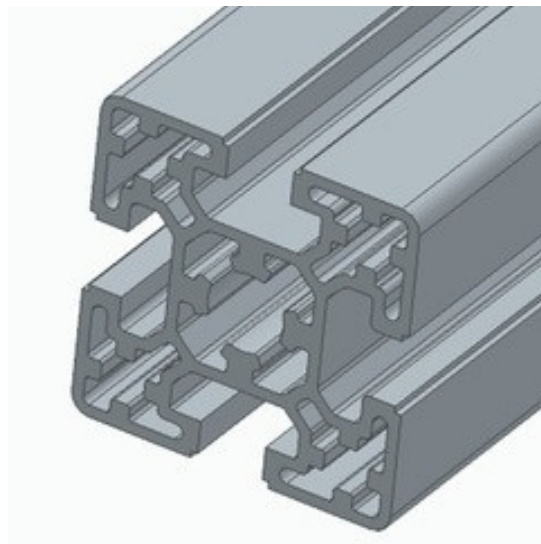


90X90 8 Slots Heavy

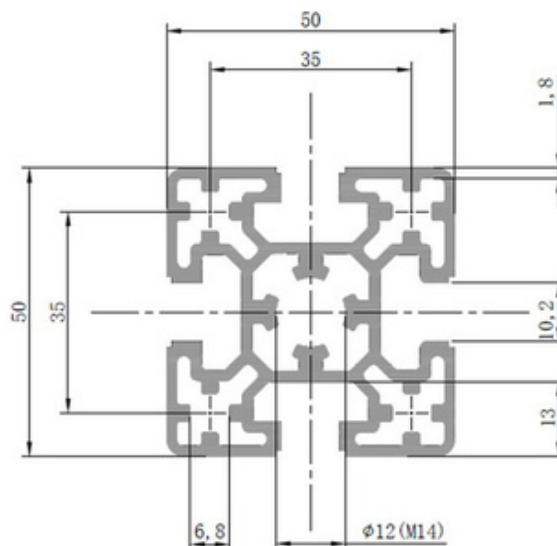


Strut Profile PG50 featuring 10mm T-slot is designed for making heavy weight assemblies.

Description	Mass (KG/M)	Part Number
Strut Profile PG50 50X50 4 slots Medium (SW)	2.370	1.11.50.050050.04.M.SW

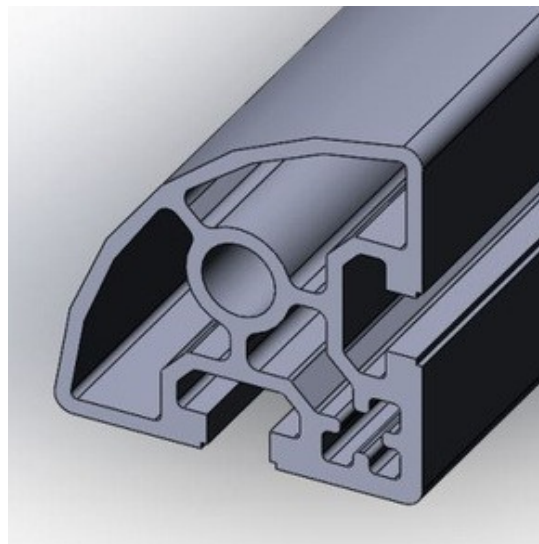


50X50 4 Slots Medium

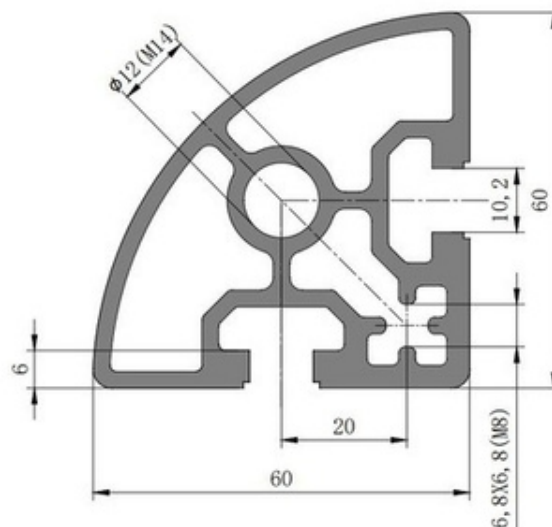


Strut Profile PG60 featuring 10mm T-slot is designed for making heavy weight assemblies.

Description	Mass (KG/M)	Part Number
Strut Profile PG60 60R90 2 slots (SW)	2.763	1.11.60.060060.R90.02.SW

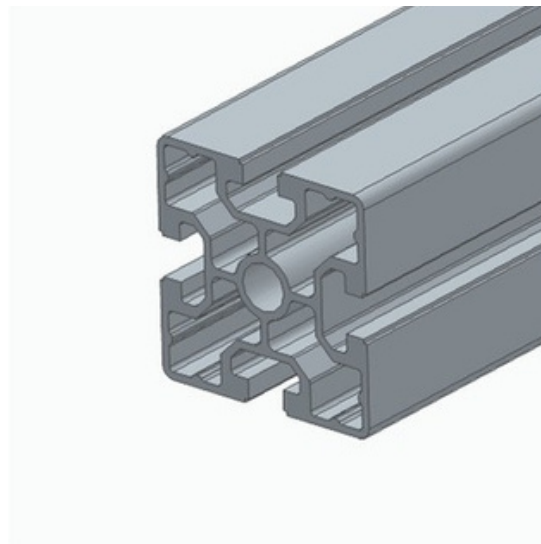


60X60 R90 2 Slots

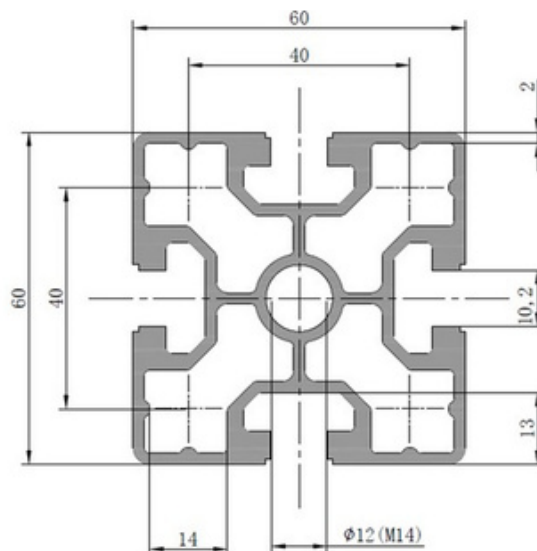


Strut Profile PG60 featuring 10mm T-slot is designed for making heavy weight assemblies.

Description	Mass (KG/M)	Part Number
Strut Profile PG60 60X60 4 slots Heavy (SW)	3.000	1.11.60.060060.04.H. SW

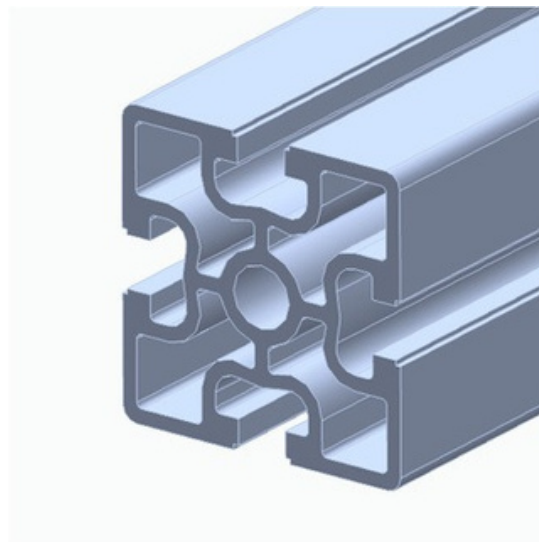


60X60 4 Slots Heavy

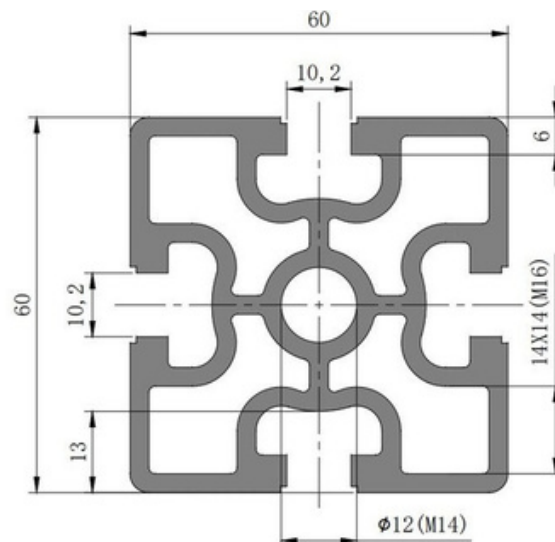


Strut Profile PG60 featuring 10mm T-slot is designed for making heavy weight assemblies.

Description	Mass (KG/M)	Part Number
Strut Profile PG60 60x60 4 slots Extra Heavy (SW)	3.764	1.11.60.060060.04.XH.SW



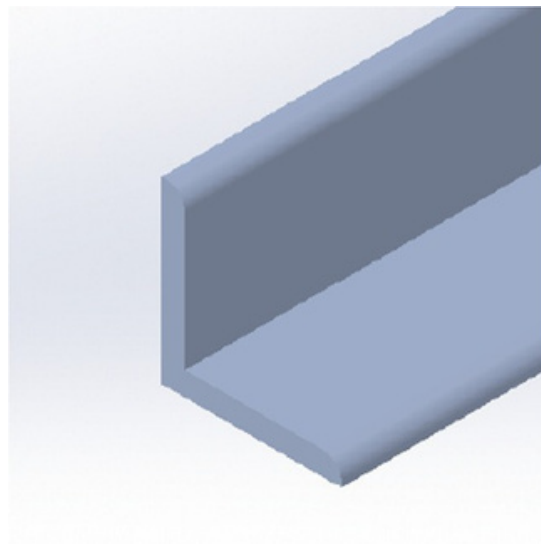
60X60 4 Slots Extra Heavy



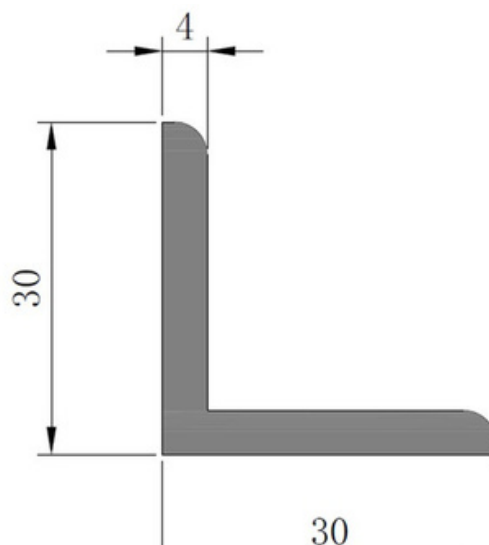
Angle Profile 30X30X4

Angle Profile is mainly used for producing angle brackets which has wide range of applications with its good flexibility.

Description	Mass (KG/M)	Part Number
Angle Profile 30X30X4 (SW2)	0.599	1.31.30030.4.SW2



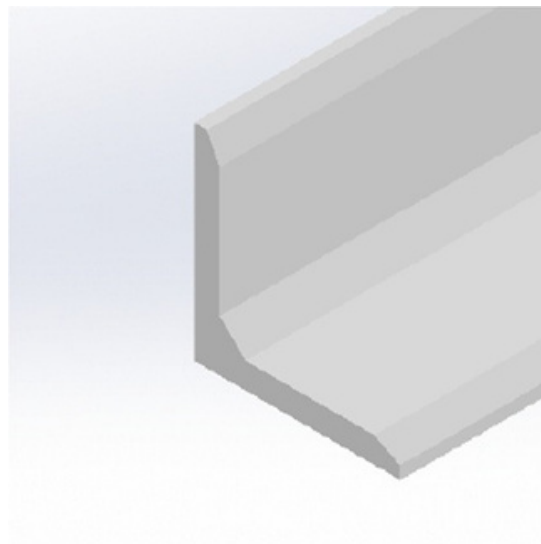
Angle Profile 30x30x4



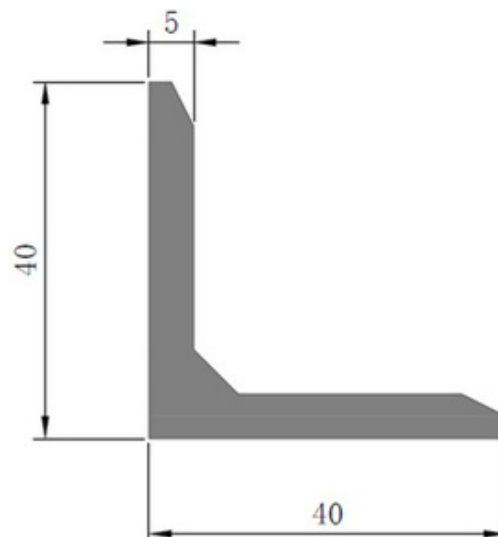
Angle Profile 40X40X5

Angle Profile is mainly used for producing angle brackets which has wide range of applications with its good flexibility.

Description	Mass (KG/M)	Part Number
Angle Profile 40X40X5 (SW)	0.986	1.31.40040.5.SW

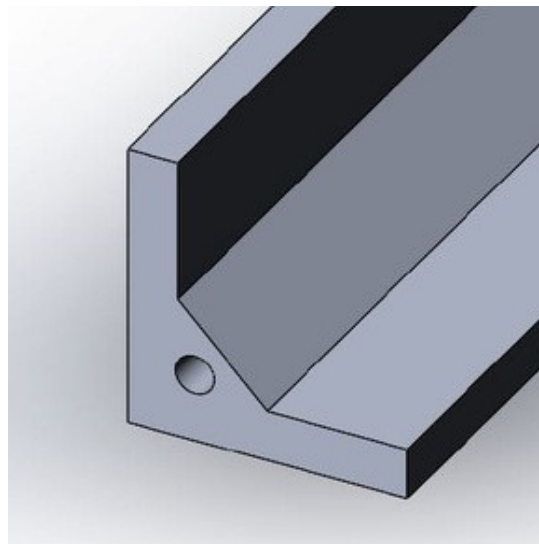


Angle Profile 40x40x5

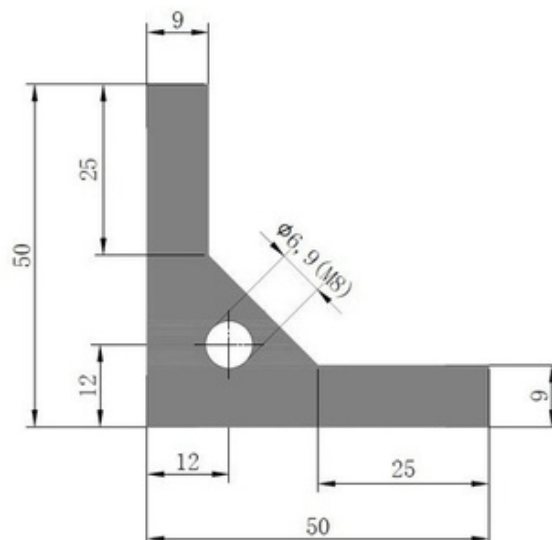


Angle Profile is mainly used for producing angle brackets which has wide range of applications with its good flexibility.

Description	Mass (KG/M)	Part Number
Angle Profile 50x50x9 (SW)	2.455	1.31.5050.09.SW



Angle Profile 50x50x9



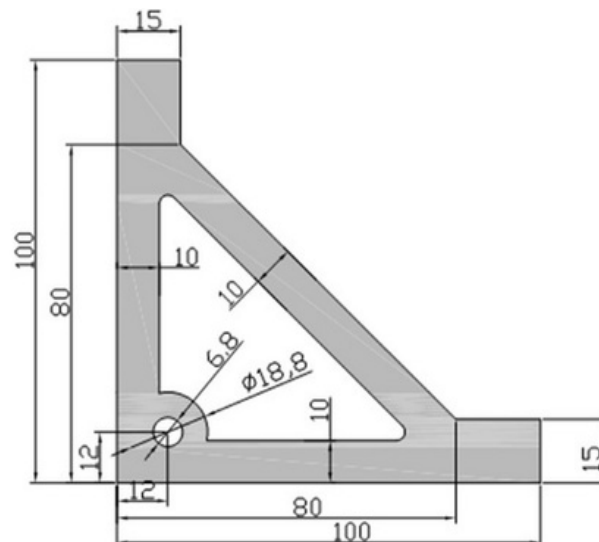
Angle Profile 100x100x15

Angle Profile is mainly used for producing angle brackets which has wide range of applications with its good flexibility.

Description	Mass (KG/M)	Part Number
Angle Profile 100x100x15 (SW)	8.420	1.31.100100.15.SW

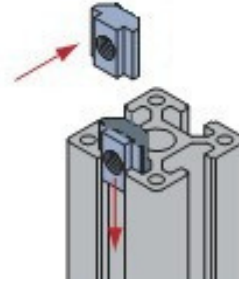


Angle Profile 100x100x15



Aluminum Profile Accessories

Pre-set Nut can be only put into T slot from profile end, with low assembly efficiency, but with good connection and stability.



Material: Pre-set Nut-nickel plated steel SW

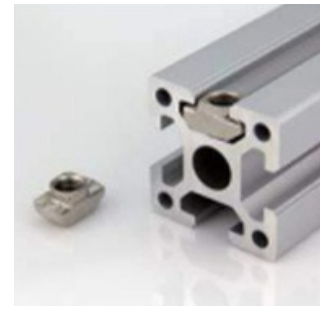
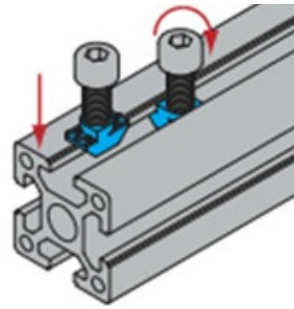
	Description	D	Mass (g)	Part Number
	Pre-set Nut-6-M4 nickel plated steel (SW)	M4	3.0	2.11.06.M4.SW
Pre-set Nut-6-M5 nickel plated steel (SW)	M5	3.0	2.11.06.M5.SW	

	Description	D	Mass (g)	Part Number
	Pre-set Nut-8-M4 nickel plated steel (SW)	M4	8.0	2.11.08.M4.SW
Pre-set Nut-8-M5 nickel plated steel (SW)	M5	8.0	2.11.08.M5.SW	
Pre-set Nut-8-M6 nickel plated steel (SW)	M6	7.0	2.11.08.M6.SW	

	Description	D	Mass (g)	Part Number
	Pre-set Nut-10-M4 nickel plated steel (SW)	M4	16.0	2.11.10.M4.SW
Pre-set Nut-10-M5 nickel plated steel (SW)	M5	16.0	2.11.10.M5.SW	
Pre-set Nut-10-M6 nickel plated steel (SW)	M6	15.0	2.11.10.M6.SW	
Pre-set Nut-10-M8 nickel plated steel (SW)	M8	14.0	2.11.10.M8.SW	

#Tolerance ± 0.5

T Nut can be inserted directly at the assembly point, which makes the assembly very efficient, however the connection strength and stability is not as good as pre- set nut.



Material: Nickel plated Steel

	Description	D	Mass (g)	Part Number
	T Nut-6-M4 nickel plated steel (SW)	M4	2.0	2.21.06.M4.SW
	T Nut-6-M5 nickel plated steel (SW)	M5	2.0	2.21.06.M5.SW

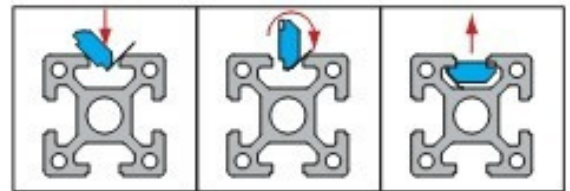
	Description	D	Mass (g)	Part Number
	T Nut-8-M4 nickel plated steel (SW)	M4	4.0	2.21.08.M4.SW
	T Nut-8-M5 nickel plated steel (SW)	M5	4.0	2.21.08.M5.SW
	T Nut-8-M6 nickel plated steel (SW)	M6	3.0	2.21.08.M6.SW

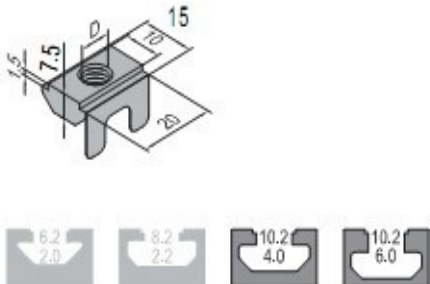
	Description	D	Mass (g)	Part Number
	T Nut-10-M4 nickel plated steel (SW)	M4	8.0	2.21.10.M4.SW
	T Nut-10-M5 nickel plated steel (SW)	M5	8.0	2.21.10.M5.SW
	T Nut-10-M6 nickel plated steel (SW)	M6	7.0	2.21.10.M6.SW
	T Nut-10-M8 nickel plated steel (SW)	M8	6.0	2.21.10.M8.SW

#Tolerance ±0.5

SubsequentNut with a spring leaf can be inserted directly at the assembly point. The spring assists with assembly and positioning. The connecting strength and stability is same as T nut.

Material: Zinc plated Steel

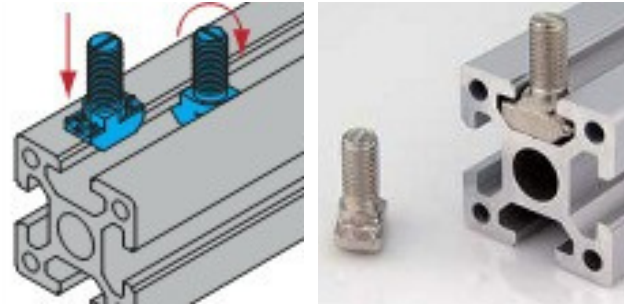


	Description	D	Mass (g)	Part Number
	Subsequent Nut-10-M6 Nickel plated steel (SW)	M6	12.0	2.31.10.M6.SW
	Subsequent Nut-10-M8 Nickel plated steel (SW)	M8	9.0	2.31.10.M8.SW

#Tolerance ± 0.5

Similar to T nut. T bolt can be inserted directly at assembly point, with high assembly efficiency. The connection strength and stability are same as T nut.

Material: Nickel plated steel




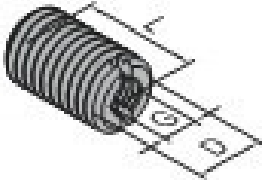
	Description	L	Mass (g)	Part Number
	T Bolt-10-20 nickel plated steel (SW)	20.0	13.0	2.41.10.20.SW

#Tolerance ±0.5

To reduce the hole diameter of the profile and improve the thread connection strength.

Material: Nickel plated steel



	Description	D	G	L	Mass (g)	Part Number
	HOLE REDUCER M12/M6(SW)	M12	M6	20.0	11.0	2.51.12.06.SW
	HOLE REDUCER M12/M8(SW)	M12	M8	20.0	7.0	2.51.12.08.SW
	HOLE REDUCER M14/M6(SW)	M14	M6	20.0	11.0	2.51.14.06.SW
	HOLE REDUCER M14/M8(SW)	M14	M8	20.0	8.0	2.51.14.08.SW
	HOLE REDUCER M14/M10(SW)	M14	M10	20.0	7.0	2.51.14.10.SW
	HOLE REDUCER M16/M8(SW)	M16	M8	20.0	18.0	2.51.16.08.SW


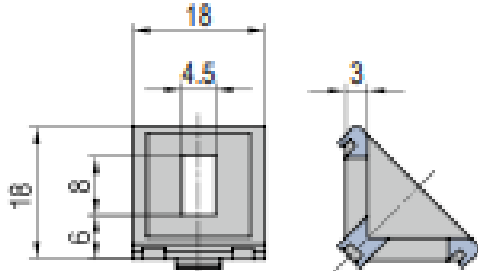

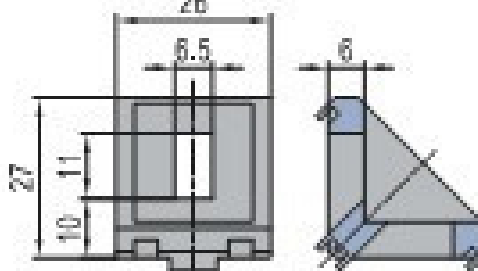
#Tolerance ±0.5

Die Cast Bracket

Die-cast bracket designed for supporting and fixing two aluminum profiles at a 90° connection, ensuring high installation stability.

Material: Diecast Aluminum



 	Description	Mass (g)	Part Number
	Die Cast Bracket-PG20-20x20 (SW)	5.0	3.21.20.2020. SW
 	Die Cast Bracket-PG30-30x30 (SW)	17.0	3.21.30.3030.SW

#Tolerance ±0.5

Die-cast bracket designed for supporting and fixing two aluminum profiles at a 90° connection, ensuring high installation stability.

Material: Diecast Aluminum



	Description	Mass (g)	Part Number
	Die Cast Bracket-PG40-40x80 (SW)	106.0	3.21.40.4080.SW

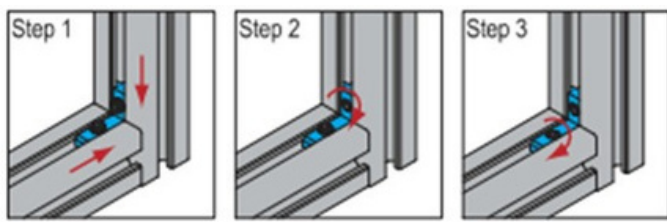
	Description	Mass (g)	Part Number
	Die Cast Bracket-PG45-45x45 (SW)	64.0	3.21.45.4545.SW

#Tolerance ±0.5

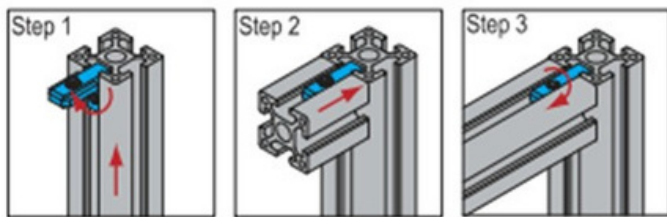
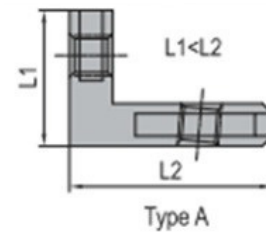
Inner Bracket (with top thread)

Inner Bracket is with low cost and high efficiency, widely used for the assembly of door, window and protection frame.

Material: Nickel plated steel



set parts in position tighten L1 top thread tighten L2 top thread



	Description	Mass (g)	Part Number
	Inner Bracket 08-A (with set screw) (SW)	18.0	3.41.08.A.SW

	Description	Mass (g)	Part Number
	Inner Bracket 10-A (with set screw) (SW)	36.0	3.41.10.A.SW

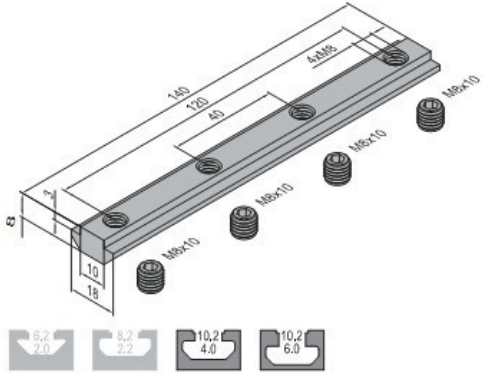
#Tolerance ±0.5

Linear Bar Connector (with top thread)

Linear Bar Connector for joining profiles end to end with a straight joint, fixed with grub screws.

Material: Zinc plated steel

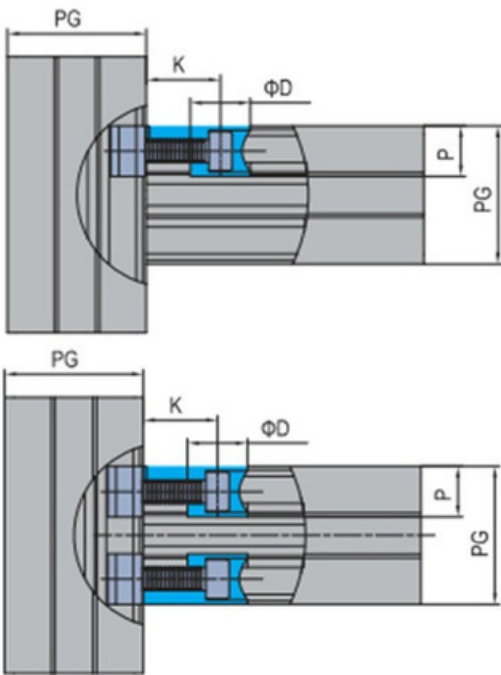
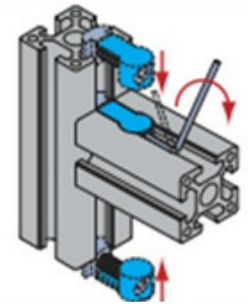


 <p>Technical drawing of the Linear Bar Connector-10. The drawing shows a perspective view of the connector with dimensions: 145 (total length), 125 (length between first two screws), 45 (length between last two screws), 6.35 (width), 1.0 (height of top flange), and 1.8 (height of bottom flange). It also shows four M8x10 grub screws. Below the drawing are four icons representing different hole sizes: 6.2/2.0, 8.2/2.2, 10.2/4.0, and 10.2/6.0.</p>	Description	Mass (g)	Part Number
<p>Linear Bar Connector-10 (with set screw) (SW)</p>	<p>118.0</p>	<p>3.51.10.SW</p>	

#Tolerance ±0.5

Butt Connector is used for profile affiliating connection and widely used in clean room.

Material: Diecast Zinc Nickel plated



Q	Featuring Set	T	Featuring Set	S	Featuring Set
	M5x20 Bolt zinc plated		M6x25 Bolt zinc plated		M8x30 Bolt zinc plated
	M5 Power Nut nickel plated		M6 Power Nut nickel plated		M8 Power Nut nickel plated

	Description	K (mm)	D (mm)	P (mm)	Mass (g)	Part Number
	BUTT CONNECTOR-10 (SW) (PG40/PG45/PG50/PG60)	22.0	17.0	14.0	15.0	3.61.10.SW

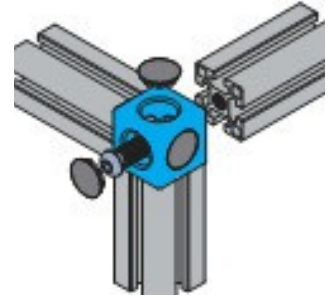
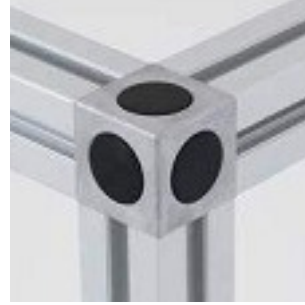
#Tolerance ±0.5

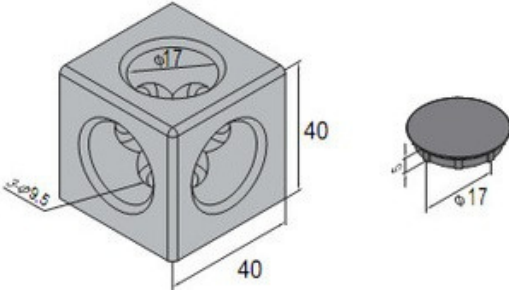
Cubic Connector

Cubic Connector: Used to join three aluminum profiles at a 90° angle, forming a strong and precise cube-like structure.

Material: Connector – Die-cast Aluminium

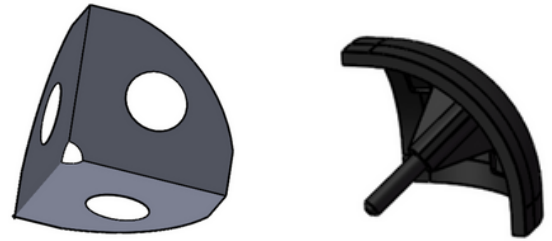
Cap Black ABS



	Description	Mass (g)	Part Number
Cubic Connector-4040-03 (SW)	117.0	3.91.4040.03.SW	

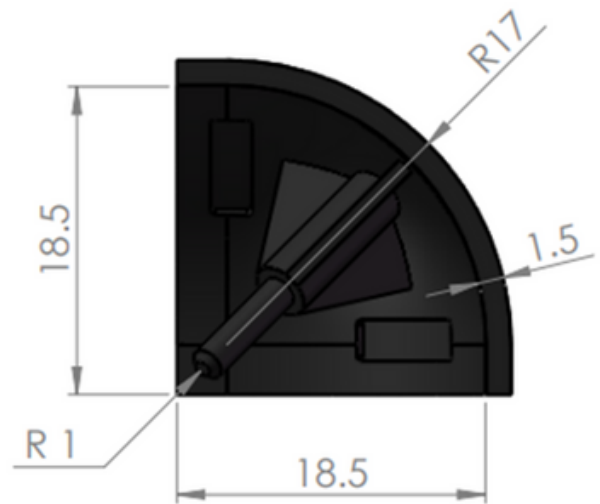
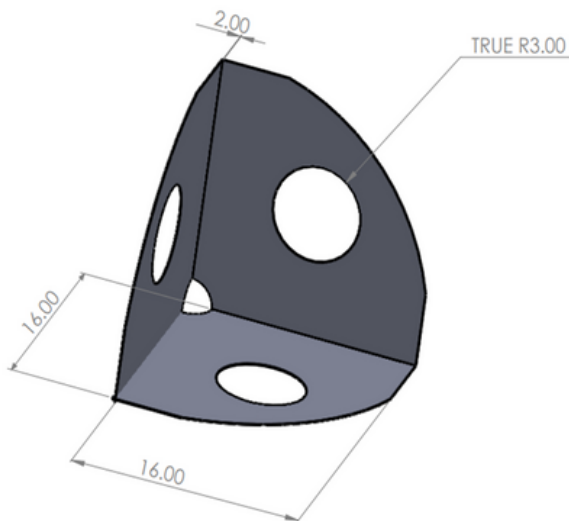
#Tolerance ± 0.5

Cubic Connector: Used to join three aluminum profiles at a 90° angle, forming a strong and precise cube-like structure.



Material: Connector – Mild Steel

Cap Black ABS



Description	Mass (g)	Part Number
Cubic Connector-2020-01MS (SW)	12.0	3.92.2020.01.MS.SW

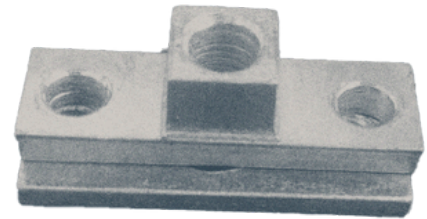
#Tolerance ±0.5

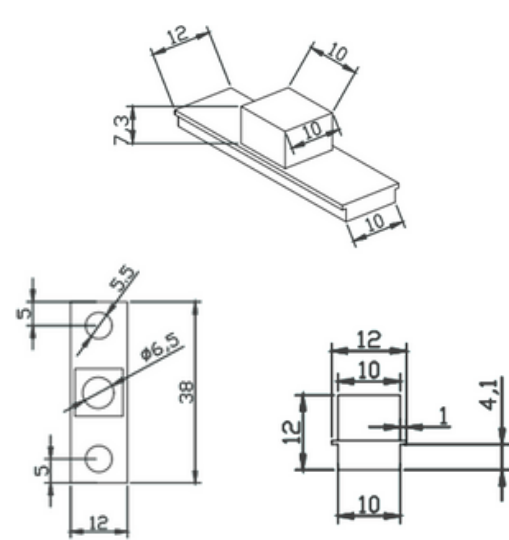
T Connector

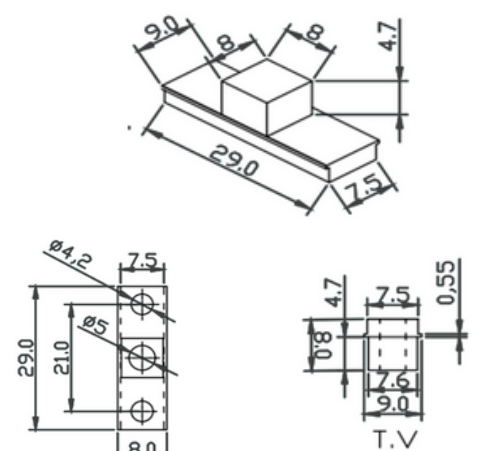
T connector - Hidden Joint: Concealed connector for aluminium profiles, providing strong internal fastening with a clean, seamless appearance.

Material: Connector – Mild Steel

Cap Black ABS

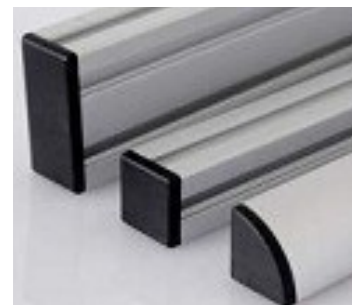


	Description	Mass (g)
	40 ser T connector SIC (SW)	45.0

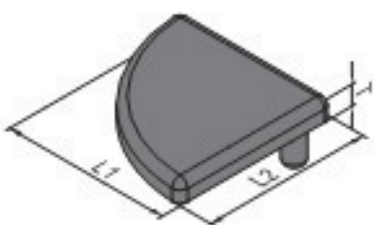
	Description	Mass (g)
	30 ser T connector SIC (SW)	30.0

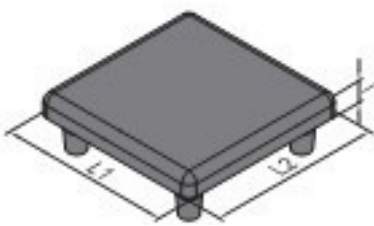
#Tolerance ±0.5


To prevent staff from any injury and improve profile end appearance.



Material: Nylon

Type A 	Description	L1 (mm)	L2 (mm)	T (mm)	Mass (g)	Part Number
	End Cap-PG20-2020R [SW]	20.0	20.0	4.0	1.0	4.11.20.2020R.SW
	End Cap-PG30-3030R [SW]	30.0	30.0	5.0	3.0	4.11.30.3030R.SW
	End Cap-PG40-4040R [SW]	40.0	40.0	5.0	6.0	4.11.40.4040R.SW
	End Cap-PG45-4545R [SW]	45.0	45.0	5.0	7.0	4.11.45.4545R.SW

Type B 	Description	L1 (mm)	L2 (mm)	T (mm)	Mass (g)	Part Number
	End Cap-PG20-2020 BK (SW)	20.0	20.0	4.0	2.0	4.11.20.2020.SW
	End Cap-PG30-3030 BK (SW)	30.0	30.0	5.0	3.0	4.11.30.3030.SW
	End Cap-PG40 4040 BK (SW)	40.0	40.0	5.0	6.0	4.11.40.4040.SW
	End Cap-PG40 4040 BK M (SW)	40.0	40.0	5.0	6.0	4.11.40.4040.M.SW
	End Cap-PG40 8080 BK (SW) - ABS	80.0	80.0	5.0	22.0	4.11.40.8080.SW
	End Cap-PG45-4545 BK (SW)	45.0	45.0	5.0	8.0	4.11.45.4545.SW

Type C 	Description	L1 (mm)	L2 (mm)	T (mm)	Mass (g)	Part Number
	End Cap-PG40-4080BK (SW)	40.0	80.0	5.0	18.0	4.11.40.4080.SW

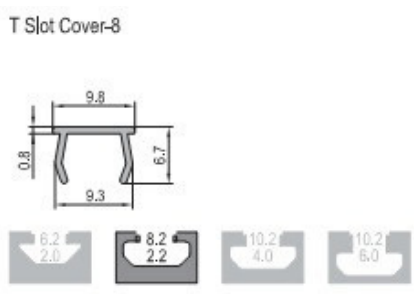
#Tolerance ±0.5

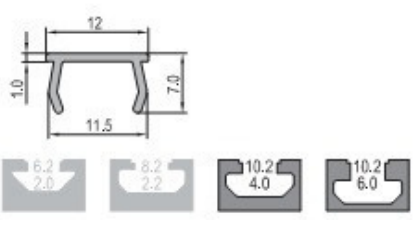
T Slot Cover

To prevent slot from contamination and improve structure appearance



Material: PP Black

 <p>T Slot Cover-8</p>	Description	Colour	Mass (g)	Delivery Length	Part Number
	T Slot Cover-8 BK (SW)	Black	22.0	2000 mm/bar	4.21.08.BK.SW

 <p>T Slot Cover-10</p>	Description	Colour	Mass (g)	Delivery Length	Part Number
	T Slot Cover-10 BK (SW)	Black	38.0	2000 mm/bar	4.21.10.BK.SW

#Tolerance ± 0.5
 #Customised colours for MOQ

To support strut profile mounted on the floor or between the platforms. Expansion bolts chocked into the floor can offer a high stability.

Material: Aluminium, spray coating, silver



	<p>Description</p>	<p>Mass (g)</p>	<p>Part Number</p>
	<p>Base Plate 4040 (SW)</p>	<p>805.0</p>	<p>5.12.40.40.SW</p>

	<p>Description</p>	<p>Mass (g)</p>	<p>Part Number</p>
	<p>Base Plate 4080 (SW)</p>	<p>975.0</p>	<p>5.12.40.80.SW</p>

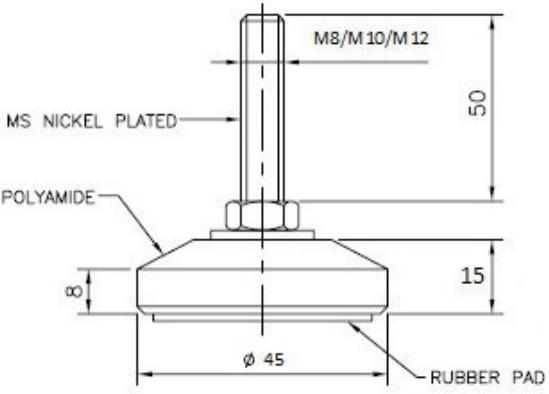
#Tolerance ±0.5

Fixed levelling base - Fixed Foot: Provides a rigid, non-moving connection between the base and stud for stable profile support.

Base Material: Nylon

Ball Stud Material: Nickel Plated



	Part Number	D	T	M	L
	SLB 45F - 0850			8.0	50.0
	SLB 45F - 1050	45.0	15.0	10.0	50.0
	SLB 45F - 1250			12.0	50.0

#Tolerance ±0.5

Adjustable Levelling Base

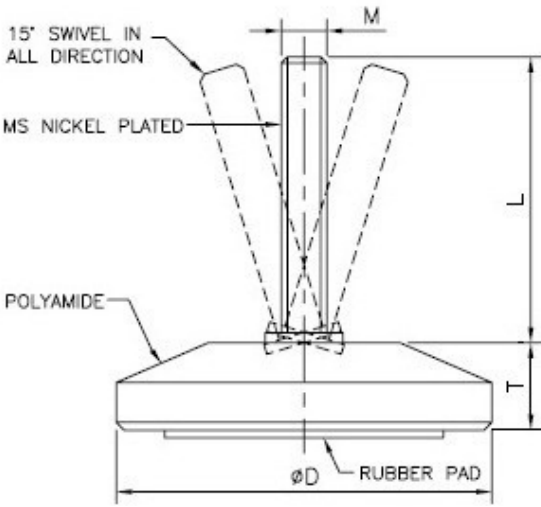
Adjustable leveling Base: Features a swiveling base that allows up to a 15° angle adjustment, along with a height-adjustable threaded spindle for precise leveling of aluminum profile structures.

Base Material: Nylon

Ball Stud Material: Nickel Plated

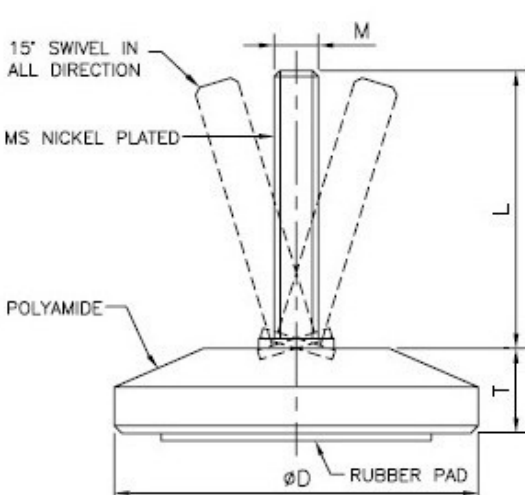
Also available in Stainless Steel



	Part Number	D	T	M	L
	SLB 60 - 0868	60	(MAX LOAD 100KG)	24.0	M8
SLB 60 - 08100	100.0				
SLB 60 - 1068	M10				68.0
SLB 60 - 10100					100.0
SLB 60 - 10150					150.0
SLB 60 - 1268	M12				68.0
SLB 60 - 12100					100.0
SLB 60 - 12150	150.0				
SLB 60 - 1668	M16				68.0
SLB 60 - 16100					100.0
SLB 60 - 16150					150.0
SLB 60 - 20100	M20				100.0
SLB 60 - 20150					150.0

#Tolerance ±0.5

#In φ100mm Grouting Design base is also available

	Part Number	D	T	M	L
	SLB 80 - 0868	80	22.0	M8	68.0
	SLB 80 - 08100				100.0
	SLB 80 - 1068			M10	68.0
	SLB 80 - 10100				100.0
	SLB 80 - 10150				150.0
	SLB 80 - 1268			M12	68.0
	SLB 80 - 12100				100.0
	SLB 80 - 12150				150.0
	SLB 80 - 1668			M16	68.0
	SLB 80 - 16100				100.0
	SLB 80 - 16150				150.0
	SLB 80 - 20100			M20	100.0
	SLB 80 - 20150	150.0			
Part Number	D	T	M	L	
SLB 100 - 16100	100	24.0	M16	100.0	
SLB 100 - 20100			M20	100.0	
SLB 100 - 24150			M24	150.0	
SLB 100 - 24200				200.0	
SLB 100 - 24250				250.0	
SLB 100 - 24300				300.0	

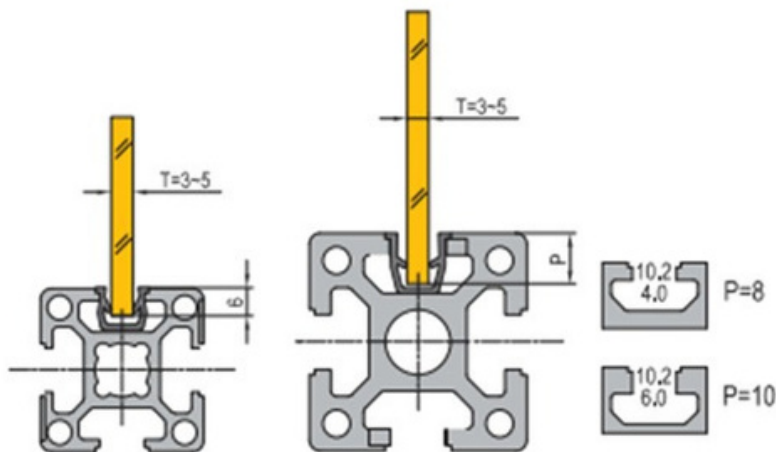
#Tolerance ± 0.5

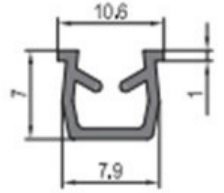

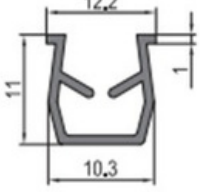

#In $\phi 100$ mm Grouting Design base is also available

T Slot Reducing Profile

T Slot reducing profile is used to reduce slot width for panel installation.

Material: Black PVC



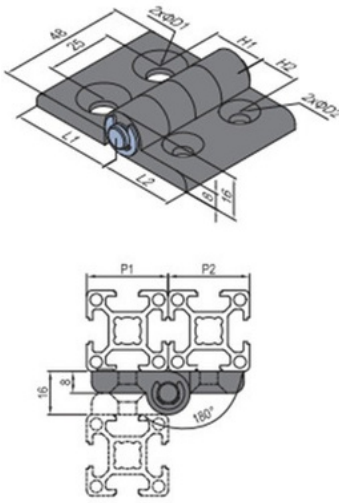
	Description	Mass (g/m)	Delivery Length	Part No.
	T Slot Reducing Profile-8 (SW)	51.0	2000 mm/bar	6.11.08.SW
	T Slot Reducing Profile-10 (SW)	65.0	2000 mm/bar	6.11.10.SW
				

#Tolerance ±0.5

PA Hinge: Used to create simple, durable, and corrosion-resistant swinging joints such as doors and panels in T-slot aluminum profile structures.



Material: Black PA6

	Description	H1 (mm)	H2 (mm)	L1 (mm)	L2 (mm)	D1 (mm)	D2 (mm)	Mass (g/m)	Part No.
	Hinge-30/30 (unit) (SW)	15.0	15.0	28.0	28.0	6.5	6.5	39.0	7.21.30.30 .SW
	Hinge-30/40 (unit) (SW)	20.0	15.0	38.0	28.0	8.5	6.5	4.0	7.21.30.40 .SW
	Hinge-40/40 (unit) (SW)	20.0	20.0	38.0	38.0	8.5	8.5	45.0	7.21.40.40 .SW

#Tolerance ±0.5

To connect movable profiles.



Material: Aluminium



Note: Ratchet handle (part number RH) is an optional accessory for all three connection types-type A, B and C.

FS	FO	FU	FX
Fastening Set	Fastening Set	Fastening Set	Fastening Set
 M10 Bolt zinc plated M8 T Nut zinc plated	 M16 Bolt zinc plated M12 Nut zinc plated	 M12 Bolt zinc plated M8 T Nut zinc plated	 M12 Bolt zinc plated M8 T Nut zinc plated

	Description	L1 (mm)	L2 (mm)	R	Mass (g/m)	Part No.
	Joint-Type- 4040-SW	40.0	40.0	35.0	220.0	8.32.4040.SW
Joint-Type- 4040-RH-SW	40.0	40.0	35.0	233.0	8.32.4040.RH.SW	

#Tolerance ±0.5



Value Delivered Since 1978

sales@swiftindustrial.in

www.aluminiumprofilesindia.com

www.swiftindustrial.in